



Sponsor Yourself™

 **QSSOS**  
OF SWITZERLAND

CYCLING BODY RESEARCH CREATION & REFINEMENTS



# 2016

CONSUMER CATALOGUE



# INDEX

## ASSOS SPECIAL PROJECTS

Overview	4
ASSOS IS FF-1 – Official Team Supplier	102
ÉQUIPE EXPLOIT – ASSOS Werksmannschaft	106
LA CAMPIONISSIMO	112

## ALS – ASSOS LAYERING SYSTEM

Outfit climaRange	6
-------------------	---

## ALS – SYSTEM OUTFITS

### SHASHA CLIMARANGE SUMMER

Man	8
Lady	23

### TIBURU CLIMARANGE FALL/SPRING

Man	32
Lady	42

### HABU CLIMARANGE EARLY WINTER

Man	52
Lady	58

### BONKA CLIMARANGE WINTER

Man	62
Lady	72

## SYSTEM OUTFITS

### CLIMA X RAINGEAR

Unisex	76
--------	----

### OFFROAD RALLY

Man	82
Lady	88

## CARE INSTRUCTIONS

Sportmedics & Special Products	98
--------------------------------	----

### ZEGHO EYE PROTECTION

100

## SIGNATURE COLLECTION

114

### GTASSOS

Urban, Leisure, Travel and Cycling Wear	122
---	-----

## ASSOS INFORMATION

Sizing Charts	128
---------------	-----





AT THE MERCEDES AMG PETRONAS FORMULA ONE TEAM, THE PHYSICAL AND MENTAL FITNESS OF THE TEAM'S DRIVERS AND PIT CREW IS A TOP PRIORITY. **CYCLING** IS NOT ONLY ONE OF THEIR PREFERRED TOOLS TO DEVELOP AND MAINTAIN FITNESS BUT ALSO COMPLEMENTS THE TEAM'S APPLICATION AND USE OF ADVANCED TECHNOLOGY AND MATERIALS.

THE MERCEDES AMG PETRONAS FORMULA ONE TEAM IS THE PERFECT PARTNER FOR ASSOS OF SWITZERLAND, A COMPANY WITH A HISTORY OF GAME-CHANGING INNOVATIONS WITHIN **CYCLING**, ON THIS JOURNEY.



OFFICIAL TEAM SUPPLIER



**AMG**  
**PETRONAS**  
FORMULA ONE TEAM



**assos**  
CYCLING BODY RESEARCH CREATION & REFINEMENTS

**ASSOS IS THE ORIGINAL SUPPLIER  
TO THE SWISS CYCLING FEDERATION**



© Kare Dehlie Thorstad





**OFFICIAL  
EQUIPMENT**



myassos@CAPEEPIC



THE **ASSOS** WERKSMANNSCHAFT IS OUR EMPLOYEES' ROAD UNIT, AN EXTENSION OF THE ASSOS TEXTILE LABORATORY, COMPRISED OF DEVOTED RACERS WITH TECHNICAL BACKGROUNDS, EX PROS, DOCTORS, "OLD FOXES", MECHANICS, TRAINERS, APPAREL ENGINEERS AND TEXTILE DESIGNERS. THE COLLECTIVE KNOWLEDGE AND EXPERIENCE WITHIN IS MASSIVE.





Sponsor Yourself™



CYCLING BODY RESEARCH CREATION & REFINEMENTS

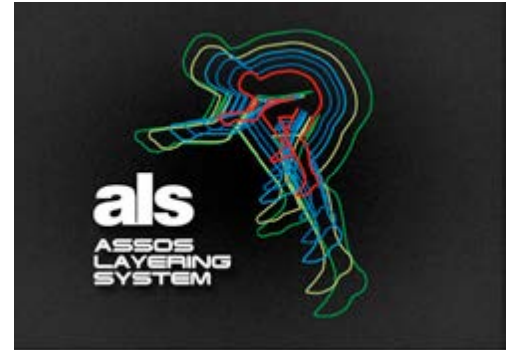
OUTFIT CLIMARANGE

## ASSOS LAYERING SYSTEM

OUTFIT SOLUTIONS



# ASSOS ALS IS A SCIENCE AND YOU ARE AT ITS CENTER!



## THE ALS CONCEPT

The ASSOS Layering System – ALS – is the technically advanced apparel system in which every item is conceived and designed to complement the others and function with them, allowing year-round comfortable cycling. The goal is to keep your body's internal microclimate dry, stable and comfortable under a wide variety of climatic conditions.

## ALS CLIMARANGE

In the mid-seventies, ASSOS introduced a completely new generation of cycling apparel that made thick, bulky, and heavy wool / acrylic garments obsolete. A new era of intelligent body insulation had begun.

## CHOOSE THE PERFECT OUTFIT FOR EVERY CLIMARANGE

### CLIMARANGES

1.4 - SHASHA  
Over 23° C

2.4 - TIBURU  
Over 15°C to 22°C

3.4 - HABU  
Over 6°C to 14°C

4.4 - BONKA  
Below 6° C



# SHASHA SYSTEM

## CLIMARANGE

# OUTFIT

## SUMMER





## 1 CAP | unisex

summerCap Uno  
roboFoil  
exploitCap\_evo7

## 2 BODY INSULATOR unisex

SS.skinFoil\_summer\_evo7  
NS.skinFoil\_summer\_evo7

## 3 JERSEY

SS.cento  
SS.mangussta  
SS.neoPro  
SS.campionissimoJersey  
SS.milleJersey\_evo7  
SS.suisseFedJersey  
NS.superLeggera  
NS.neoPro

## 4 SHORTS

T.équipe\_S7  
T.neoPro\_S7  
T.cento\_S7  
T.campionissimo\_S7  
H.milleShorts\_S7  
CS.Uno

## 5 GLOVES | unisex

summerGloves\_S7

## 6 SOCKS | unisex

milleSocks\_evo7  
équipeSocks\_evo7  
exploitSocks\_evo7  
superleggeraSocks\_evo7

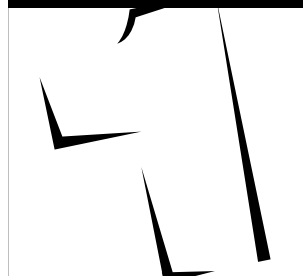
THIS IS THE **ASSOS** WERKSMANNSCHAFT SHOE  
ASSOS cyclingSlippersG1



# SHASHA

SYSTEM OUTFIT

N.



.4

CLIMARANGE  
SUMMER





A full-page background image showing two cyclists on a paved mountain road. The cyclist in the foreground is wearing a black jersey with yellow sleeves and a black helmet, looking down. The cyclist behind him is wearing a black and red jersey and a white helmet, looking forward. The background features a steep, rocky hillside and a clear blue sky.

OUTFIT CLIMARANGE SHASHA

## SS.CAMPIONISSIMOJERSEY

JERSEY MAN

From its integrated skinFoil to full mesh back, seamless arms, and its new cut in the shoulder, this jersey will allow you to ride in the hottest summer weather in total comfort.

OUTFIT CLIMARANGE SHASHA

## SS.MILLEJERSEY\_EV07

JERSEY MAN

An iconic summer jersey with a combination of a relaxed raglan pattern design and the new type 116 custom fabric. Together they make this milleJersey an extreme “freedomFit”.





## 1 CAP | unisex

### SUMMERCAP UNO

Stylish summerCap for the true pro look. Very comfortable thanks to its redesigned, super-light, sweat absorbing, elastic, incorporated headband.

Sizes\*\* one size  
Composition\* 100% CO



blackVolkanga 13.70.713.12



whitePanther 13.70.713.56

### ROBOFOIL

The ultra-light cap. Wear under your helmet whenever you need optimal sweat transportation, thermo regulation and high sun protection. Taped seams for minimal volume and no pressure points, antibacterial.

Sizes\*\* 0 – I – II  
Composition\* 55% PP, 36% PL, 9% EA



whitePanther 13.70.717.56



### EXPLOITCAP\_EV07

This cap is designed to better fit the purpose the majority of us will use it for – wearing under a helmet. Its new design and improved materials really do provide a higher level of performance.

Sizes\*\* one size  
Composition\* 70% CO, 30% PL



redSwiss 13.70.724.47



voltYellow 13.70.724.33



calypsoBlue 13.70.724.29

## 2 BODY INSULATOR | unisex

### NS.SKINFOIL\_SUMMER\_EV07

The ASSOS skinFoil bodyInsulator series has been specifically designed to go with your ASSOS jersey jackets from both an ergonomic and a technical point of view. No sleeves, super light.

Sizes\*\*\* 0 – I – II – III  
Composition\* 85% PA, 15% PL



holyWhite 13.40.414.57

### SS.SKINFOIL\_SUMMER\_EV07

Seamless construction allows for a pleasing, non-restrictive, total comfort fit. The skinFoil insulators absorb, transport and evaporate moisture quickly and efficiently. Short sleeves.

Sizes\*\*\* 0 – I – II – III  
Composition\* 85% PA, 15% PL



holyWhite 13.40.415.57

## 3 JERSEY

### SS.CENTO\_S7

Our long distance jersey, highly breathable and in our newly developed comfortFit! Great colours – great fit!

Sizes XS – S – M – L – XL – XLG – TIR  
Composition\* 55% PL, 34% PA, 11% EA



blackVolkanga 13.20.254.12



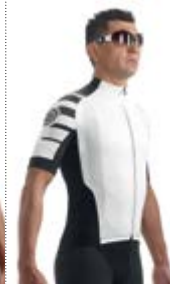
calypsoBlue 13.20.254.28



voltYellow 13.20.254.31



redSwiss 13.20.254.48



whitePanther 13.20.254.56



### 3 JERSEY

#### SS.MANGUSSTA

The mangussta jersey features ASSOS pattern design – performanceFit – not too snug and not too loose. Depending on the temperatures, combine it with one of our ASSOS skinFoil bodyInsulators as first layer + armWarmers.

Sizes XS – S – M – L – XL – XLG – TIR  
 Composition\* 85% PL, 9% EA, 6% PA



blackVolkanga 13.20.247.12



redSwiss 13.20.247.48



whitePanthor 13.20.247.56



#### SS.NEOPRO

A fresh and clean design. The longer sleeves and slightly higher collar give it a distinctive look. Our first jerseys with a textile made out of 100% recycled p.e.t. bottles! Available in the national designs of Belgium, Canada, Italy and UK.

Sizes XS – S – M – L – XL  
 Composition\* 97% PL, 2% PA, 1% EA



Belgium 13.20.253.92



Canada 13.20.253.93



Italy 13.20.253.95



UK 13.20.253.97



#### SS.CAMPIONISSIMOJERSEY NEW

From its integrated skinFoil to full mesh back, seamless arms, and its new cut in the shoulder, this jersey will allow you to ride in the hottest summer weather in total comfort.

Sizes XS – S – M – L – XL – XLG – TIR  
 Composition\* 42% PA, 23% PP, 19% EA, 16% PL



hollyWhite 11.20.256.57



voltYellow 11.20.256.33



nationalRed 11.20.256.47



## 3 JERSEY

### SS.MILLEJERSEY\_EV07 NEW

An iconic summer jersey with a combination of a relaxed raglan pattern design and the new type 116 custom fabric. Together they make this milleJersey an extreme "freedomFit".

Sizes XS – S – M – L – XL – XLG – TIR  
Composition\* 82% PL, 13% PA, 5% EA



holyWhite 11.20.256.57

nationalRed 11.20.256.47

voltYellow 11.20.256.33

calypsoBlue 11.20.256.29

pitonGreen 11.20.256.63

### SS.SUISSEFEDJERSEY\_EV07

The new official Swiss Cycling Federation jersey in ASSOS Cl-graphics. (Athletes version features sponsor branding. Not for sale.) RacingFit.

Sizes XS – S – M – L – XL – XLG – TIR  
Composition\* 89% PL, 10% PA, 1% EA



nationalRed 13.20.257.99

### NS.SUPERLEGGERA

Our superlight, sleeveless jersey for hotSummer days features new textiles, new pattern design, a full front zipper, 3 rear pockes + safety pocket, UV protection 50+. On a warm spring or cold summer day, combine it with a longsleeve ASSOS skinFoil underneath.

Sizes S – M – L – XL – XLG – TIR  
Composition\* 70% PL, 25% PA, 5% EA



blackVolkanga 11.22.246.12

redSwiss 11.22.246.48

whitePanther 11.22.246.56

### NS.NEOPRO

Our sleeveless jersey for summer training rides or indoor riding. Combine it with a shortsleeve baselayer or wear it directly on your skin on hotSummer days (don't forget the sunscreen!).

Sizes XS – S – M – L – XL  
Composition\* 89% PL, 10 % PA, 1% EA



Switzerland 13.22.255.87

Australia 13.22.255.88

Flanders 13.22.255.89



## 4 SHORTS

### T.NEOPRO\_S7

Our most attractively priced shorts feature a regular, all-around fit. They're ASSOS, so they use the exact same high quality materials and technologies as the higher levels. Simply an amazing pair of shorts! You need them!

Sizes XS – S – M – L – XL – XLG – TIR

Composition\* 70% PA, 18% EA, 12% PES



blackVolkanga 11.10.160.12



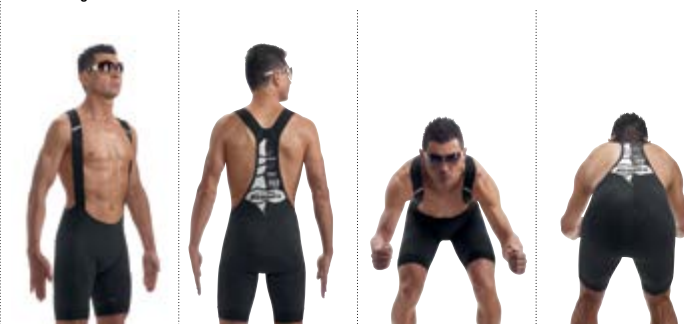
neoPro\_S7 insert

### T.ÉQUIPE\_S7

T.équipe is our racingfit proposition. They are perfectly tailored to fit a racing type cycling body. A little more compression, a little snugger fit and a more anatomically shaped insert. They're the ideal equipment for frequent riders and racing.

Sizes XS – S – M – L – XL – XLG – TIR

Composition\* 70% PA, 18% EA, 12% PES



blackVolkanga 11.10.161.12



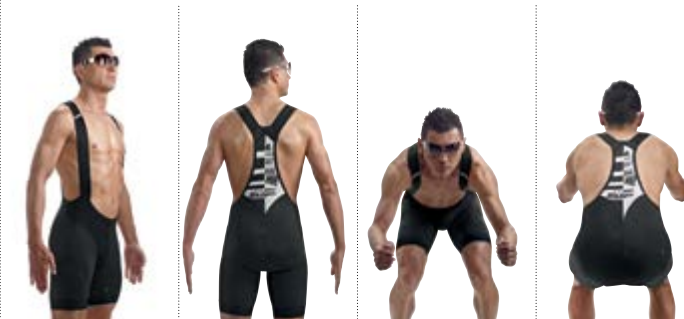
équipe\_S7 insert

### T.CENTO\_S7

Our high performance, ultra-long-distance shorts. They feature our comfortFit: less compression and a less restrictive fit on the waist and abdominal areas. The unique insert is a small masterpiece, specifically designed for ultra-long-distance missions.

Sizes XS – S – M – L – XL – XLG – TIR

Composition\* 73% PA, 17% EA, 10% PES



blackVolkanga 11.10.162.12



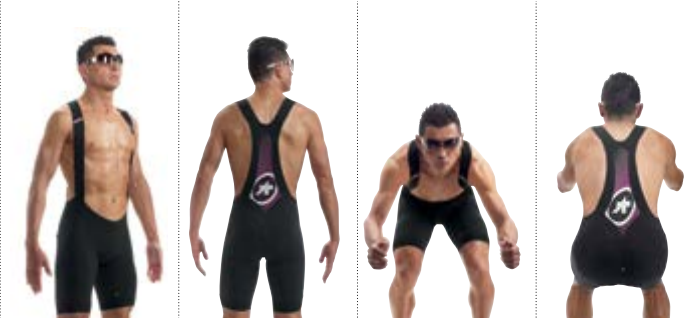
cento\_S7 insert

### T.CAMPIONISSIMO\_S7

These are our push-it-past-the-limit concept shorts. They are unique in that they do not use traditional spandex fabrics. When to wear? Every day is not a Campionissimo day. Save them for the day when you need every advantage, when you can't afford to compromise.

Sizes XS – S – M – L – XL – XLG – TIR

Composition\* 59% PA, 31% EA, 10% PES



blackVolkanga 11.10.163.12



campionissimo\_S7 insert

### 4 SHORTS

#### H.MILLESHORTS\_S7

ASSOS offers only one men's halfshort, the H.MilleShorts\_S7. Perfect for hotSummer or indoor rides, or as a baselayer under winter tights. Tailored for riders who want to ride without bib suspenders.

Sizes XS – S – M – L – XL – XLG – TIR  
Composition\* 80% PA, 20% EA



blackBlack 11.10.165.15



mille\_S7 insert

#### CS.UNO

One-piece, body-hugging, next-to-skin aerodynamic suit. cS.Uno is anatomically cut for the time trial position.

Sizes XS – S – M – L – XL – XLG – TIR  
Composition\* 43% PL, 37% PA, 20% EA



black 11.11.107.10



white 11.11.107.50



Fl.Uno\_S5 insert

### 5 GLOVES | unisex

#### SUMMERGLOVES\_S7

They feature improved padding in the palm to better dampen vibrations, and mesh panels between the fingers for a lighter, less restrictive fit.

Sizes XS – S – M – L – XL – XLG  
Composition\*  
Inside 80% PA, 20% EA  
Outside 70% PL, 20% EA 10% PU



blackVolkanga 13.50.509.12



redSwiss 13.50.509.48



whitePanther 13.50.509.56



**6 SOCKS unisex**
**MILLESOCKS\_EV07**

Using the same platform as the previous version of the milleSock, the evo7 version sees new colours for summer 2016. Sold in a pack of two.

Sizes\*\* 0 – I – II  
 Composition\* 70% PA, 30% EA


**holyWhite** 13.60.649.57 + **blockBlack**

**nationalRed** 13.60.649.47 + **blockBlack**

**voltYellow** 13.60.649.33 + **blockBlack**

**calypsoBlue** 13.60.649.29 + **blockBlack**

**pitonGreen** 13.60.649.63 + **blockBlack**
**EQUIPESOCKS\_EV07**

Taking our 2-in-1 platform used on our duathlonSock, these are perfect for both running and cycling. We have refined the colours available for the new season.

Sizes\*\* 0 – I – II  
 Composition\* 50% PA, 35% EA, 15% PP


**whiteAmetyst** 13.60.651.65 + **holyWhite**

**nationalRed** 13.60.651.47 + **blockBlack**

**voltYellow** 13.60.651.33 + **blockBlack**

**holyWhite** 13.60.651.57 + **blockBlack**

### 6 SOCKS | unisex

#### EXPLOITSOCKS\_EV07

When riding and racing, all the cyclists in the ASSOS inner circle demand products that provide the ultimate in performance and comfort. These socks have been designed to this principle, striking the optimal balance between performance and comfort in the summer months.

Sizes\*\* 0 – I – II

Composition\* 50% PA, 35% EA, 15% PP

#### SUPERLEGGERSOCKS\_EV07

The superLeggeraSocks fit just below the ankle. Highly breathable, very light textile. Perfect for hot summer days.

Sizes\*\* 0 – I – II

Composition\* 80% PA, 20% EA

### ASSOSOIRES | unisex

#### ARMPROTECTORS\_S7

The ASSOS armProtectors\_S7 are perfect to wear during long summer rides when you need extra protection against harmful UV rays, cooling breezes, or on long descents.

Sizes\*\*\* 0 – I – II

Composition\* 54% PA, 36% PL, 10% EA

#### SUMMERBOOTIES\_S7

Replaces the lycraOvershoe. It's a light overshoe for mild conditions in spring, summer and fall.

Sizes\*\*\*\* 0 – I – II

Composition\* 80% PA, 20% EA



**nationalRed** 13.60.652.47



**voltYellow** 13.60.652.33



**calypsoBlue** 13.60.652.29



**black** 13.60.636.12



**white** 13.60.636.56



**whitePanther** 13.80.803.50



**blackVolkanga** 13.62.638.12







# SHASHA SYSTEM OUTFIT

## CLIMARANGE SUMMER





## 1 CAP | unisex

summerCap Uno  
roboFoil  
éxploitCap\_evo7

## 2 BODY INSULATOR unisex

SS.skinFoil\_summer\_evo7  
NS.skinFoil\_summer\_evo7

## 3 JERSEY

SS.laalaLaiJersey\_evo7 Lady  
NS.superLeggera Lady

## 4 SHORTS

T.laalaLaiShorts\_S7 Lady  
H.laalaLaiShorts\_S7 Lady  
tB.laalaLai

## 5 GLOVES | unisex

summerGloves\_S7

## 6 SOCKS | unisex

milleSocks\_evo7  
équipeSocks\_evo7  
éxploitSocks\_evo7  
superleggeraSocks\_evo7

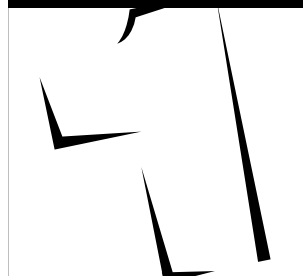
THIS IS THE **ASSOS** WERKSMANNSCHAFT SHOE  
ASSOS cyclingSlippersG1



# SHASHA

SYSTEM OUTFIT

N.



.4

CLIMARANGE  
SUMMER





A photograph of two cyclists riding on a road bike. The cyclist in the foreground is wearing a white and black jersey and black shorts. The cyclist in the background is wearing a yellow and black jersey and black shorts. They are both wearing helmets and sunglasses. The background is a blurred outdoor setting with trees and a car.

OUTFIT CLIMARANGE SHASHA

## **SS.LAALALAIJERSEY\_EV07 LADY**

JERSEY LADY

This is a product for riders who demand the ultimate in performance. Light, breathable and cut specifically for women, we believe it strikes the perfect balance between performance, cut and aesthetics.



OUTFIT CLIMARANGE SHASHA

## T.LAALALAISHORTS\_S7

SHORTS LADY

These are the perfect shorts for the female rider who demands the most from her apparel. With our all-new insert, a cut that improves comfort, new clasp, and enhanced bibs and back, these bib shorts are a game changer for female cyclists.







### 1 CAP | unisex

#### SUMMERCAP UNO

Stylish summerCap for the true pro look. Very comfortable thanks to its redesigned, super-light, sweat absorbing, elastic, incorporated headband.

Sizes**	one size
Composition*	100% CO
Pics	page 14

#### ROBOFOIL

The ultra-light cap. Wear under your helmet whenever you need optimal sweat transportation, thermo regulation and high sun protection. Taped seams for minimal volume and no pressure points, antibacterial.

Sizes**	0 – I – II
Composition*	55% PP, 36% PL, 9% EA
Pics	page 14

#### EXPLOITCAP\_EV07

This cap is designed to better fit the purpose the majority of us will use it for – wearing under a helmet. Its new design and improved materials really do provide a higher level of performance.

Sizes**	one size
Composition*	70% CO, 30% PL
Pics	page 14

### 2 BODY INSULATOR | unisex

#### NS.SKINFOIL\_SUMMER\_EV07

The ASSOS skinFoil bodyInsulator series has been specifically designed to go with your ASSOS jersey jackets from both an ergonomic and a technical point of view. No sleeves, super light.

Sizes***	0 – I – II – III
Composition*	85% PA, 15% PL



holyWhite 13.40.414.57

#### SS.SKINFOIL\_SUMMER\_EV07

Seamless construction allows for a pleasing, non-restrictive, total comfort fit. The skinFoil insulators absorb, transport and evaporate moisture quickly and efficiently. Short sleeves.

Sizes***	0 – I – II – III
Composition*	85% PA, 15% PL



holyWhite 13.40.415.57

### 3 JERSEY

#### SS.LAALALAJERSEY\_EV07 LADY NEW

This is a product for riders who demand the ultimate in performance. Light, breathable and cut specifically for women, we believe it strikes the perfect balance between performance, cut and aesthetics.

Sizes	XS – S – M – L – XL
Composition*	50% PA, 30% PL, 20% EA



blockBlack 12.20.258.15



nationalRed 12.20.258.47



voitYellow 12.20.258.33



#### NS.SUPERLEGGERA LADY

Perfect for hot summer days. In combination with additional layers, it can function as a super-Leggera gilet. On a colder summer day, use it in combination with one of our skinFoils.

Sizes	XS – S – M – L – XL
Composition*	70% PL, 25% PA, 5% EA



blackVolkanga 12.22.244.12



redSwiss 12.22.244.48



whitePanther 12.22.244.56

\* Composition: CF \_ Carbon Fiber, CO \_ Cotton, EA \_ Elastane, EOL \_ Elastolefin, PA \_ Polyamide, PL \_ Polyester, PP \_ Polypropylene, PTFE \_ Polytetrafluorethylene, PU \_ Polyurethane, WO \_ Wool

\*\* Head circumference: 0 = 48–53 cm, I = 53–58 cm, II = 58–63 cm | \*\*\* 0 = XS – S, I = M, II = L – XL, III = XLG – TIR | \*\*\*\* Discontinued from Fall/Winter 2016

## 4 SHORTS

### T.LAALALAISHORTS\_S7 NEW

These are the perfect shorts for the female rider who demands the most from her apparel. With our all-new insert, a cut that improves comfort, new clasp, and enhanced bibs and back, these bib shorts are a game changer for female cyclists.

Sizes XS – S – M – L – XL

Composition\* 73% PA, 18% EA, 9% PL



blockBlack 12.10.172.15



Lady\_S7 insert

### H.LAALALAISHORTS\_S7 LADY

The new lady specific halfshorts for the performance-oriented woman. There are a lots of ladies' cycling shorts on the market. This one is for the lady who demands the perfect fit, a clean look, enhanced performance, and total comfort in the saddle.

Sizes XS – S – M – L – XL

Composition\* 80% PA, 20% EA



blockBlack 12.10.166.15



Lady\_S7 insert

### TB.LAALALAI

The lady monosuit bibshort. Combines a woman-specific bibshort and sleeveless top in **one**. Perfect for summer. Zipped rear security pocket. FI.Lady\_S5 insert.

Sizes XS – S – M – L – XL

Composition\* 58% PA, 25% PL, 17% EA



blackVolkanga 12.10.141.12



whitePanther 12.10.141.56



FI.Lady\_S5 insert

## 5 GLOVES | unisex

### SUMMERGLOVES\_S7

They feature improved padding in the palm to better dampen vibrations, and mesh panels between the fingers for a lighter, less restrictive fit.

Sizes XS – S – M – L – XL – XLG

Composition\* 80% PA, 20% EA

Inside 70% PL, 20% EA 10% PU

Outside 70% PL, 20% EA 10% PU

Pics page 18

## 6 SOCKS | unisex

### MILLESOCKS\_EV07

Using the same platform as the previous version of the milleSock, the evo7 version sees new colours for summer 2016. Sold in a pack of two.

Sizes**	0 – I – II
Composition*	70% PA, 30% EA



**holyWhite** 13.60.649.57 + **blockBlack**



**nationalRed** 13.60.649.47 + **blockBlack**



**voltYellow** 13.60.649.33 + **blockBlack**



**calypsoBlue** 13.60.649.29 + **blockBlack**



**pitonGreen** 13.60.649.63 + **blockBlack**

### EQUIPESOCKS\_EV07

Taking our 2-in-1 platform used on our duathlonSock, these are perfect for both running and cycling. We have refined the colours available for the new season.

Sizes**	0 – I – II
Composition*	50% PA, 35% EA, 15% PP



**whiteAmethyst** 13.60.651.65 + **holyWhite**



**nationalRed** 13.60.651.47 + **blockBlack**



**voltYellow** 13.60.651.33 + **blockBlack**



**holyWhite** 13.60.651.57 + **blockBlack**



**6 SOCKS | unisex**

**EXPLOITSOCKS\_EV07**

When riding and racing, all the cyclists in the ASSOS inner circle demand products that provide the ultimate in performance and comfort. These socks have been designed to this principle, striking the optimal balance between performance and comfort in the summer months.

Sizes\*\* 0 – I – II  
Composition\* 50% PA, 35% EA, 15% PP

**SUPERLEGGERASOCKS\_EV07**

The superLeggeraSocks fit just below the ankle. Highly breathable, very light textile. Perfect for hot summer days.

Sizes\*\* 0 – I – II  
Composition\* 80% PA, 20% EA

**ASSOSOIRES | unisex**

**ARMPROTECTORS\_S7**

The ASSOS armProtectors\_S7 are perfect to wear during long summer rides when you need extra protection against harmful UV rays, cooling breezes, or on long descents.

Sizes\*\*\* 0 – I – II  
Composition\* 54% PA, 36% PL, 10% EA  
Pics page 20

**SUMMERBOOTIES\_S7**

Replaces the lycraOvershoe. It's a light overshoe for mild conditions in spring, summer and fall.

Sizes\*\*\*\* 0 – I – II  
Composition\* 80% PA, 20% EA  
Pics page 20



**nationalRed** 13.60.652.47



**voltYellow** 13.60.652.33



**calypsoBlue** 13.60.652.29



**black** 13.60.636.12



**white** 13.60.636.56

2

4

*tiburu*

CLIMARANGE

SYSTEM

OUTFIT

FALL/SPRING

als

ASSOS

LAYERING

SYSTEM





## 1 CAP | unisex

intermediateHeadband\_S7

## 2 BODY INSULATOR unisex

SS.skinFoil\_spring/fall\_evo7  
LS.skinFoil\_spring/fall\_evo7

## 3 JACKET

iJ.tiBuru  
LS.milleIntermediateJacket\_evo7  
iJ.intermediate  
iJ.suisseOlympiakos  
iG.falkenZahn  
(+LS.skinFoil\_spring/fall\_evo7)

## 4 KNICKERS + SHORTS

TK.tiburuKnickers\_S7  
T.tiburuShorts\_S7

## 5 GLOVES | unisex

tiburuGloves\_evo7

## 6 SOCKS | unisex

intermediateSocks\_S7

THIS IS THE **ASSOS** WERKSMANNSSCHAFT SHOE  
ASSOS cyclingSlippersG1

**tiburu**  
SYSTEM OUTFIT

N.

4

CLIMARANGE  
SPRING/FALL

OUTFIT CLIMARANGE TIBURU

## IJ.INTERMEDIATE PROFBLACK

JACKET MAN

The profBlack version of the iJ.Intermediate jacket, this is our Spring/Fall long-sleeve riding jacket. Essentially a summer jersey with long sleeves and increased protection from the wind, it is already a firm favourite. Now featured in the profBlack limited edition collection, it is perfect for when you want to ride under the radar.







OUTFIT CLIMARANGE TIBURU

## MILLEINTERMEDIATEJACKET\_EV07

JACKET MAN

The successor to the intermediate jacket, we've created a milleCut jacket that will give you the ultimate performance at an amazing price point. Packed full of refinements and using all-new fabrics, we are able to bring you a jacket that we are sure will rarely be left hanging in your wardrobe.







## 1 CAP | unisex

### INTERMEDIATEHEADBAND\_S7

Ultrathin, low volume, seamless headband, perfect for cool spring and fall days. Flat, one-piece construction allows it to easily fit under your helmet, and hollow polypropylene fibers ensure speedy wicking properties.

Sizes\*\* I – II

Composition\* 70% PP, 18% PA, 12% EA



blackVolkanga 13.74.728.12



whitePanther 13.74.728.56

## 2 BODY INSULATOR | unisex

### SS.SKINFOIL\_SPRING/FALL\_EV07

Seamless construction allows for a pleasing, non-restrictive, total comfort fit. The skinFoil insulators absorb, transport and evaporate moisture quickly and efficiently. Short sleeves.

Sizes\*\*\* 0 – I – II – III

Composition\* 82% PA, 18% PL



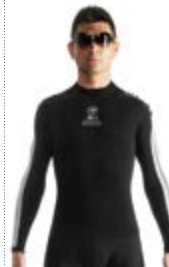
blackVolkanga 13.40.416.15

### LS.SKINFOIL\_SPRING/FALL\_EV07

Seamless construction allows for a pleasing, non-restrictive, total comfort fit. The skinFoil insulators absorb, transport and evaporate moisture quickly and efficiently. Long sleeves.

Sizes\*\*\* 0 – I – II – III

Composition\* 82% PA, 18% PL



blackVolkanga 13.40.417.15

## 3 JACKET

### iJ.TIBURU

Our warm and soft longsleeve jersey for spring and fall. Engineered to work perfectly with one of our long-sleeve skinFoil underneath.

Sizes XS – S – M – L – XL – XLG – TIR

Composition\* 43% PL, 37% PA, 20% EA



blackVolkanga 11.30.316.12



redSwiss 11.30.316.48



pitonGreen 11.30.316.63



### iJ.INTERMEDIATE NEW COLOR

Essentially a summer jersey with long sleeves and increased protection from the wind, it is already a firm favourite. Now featured in the profBlack limited edition collection, it is perfect for when you want to ride under the radar.

Sizes XS – S – M – L – XL – XLG – TIR

Composition\* 70% PES, 10% PA, 6% PU, 5% EA



profBlack 11.30.32.13 NEW



blackVolkanga 11.30.321.12\*\*\*\*



redSwiss 11.30.321.48\*\*\*\*



whitePanther 11.30.321.56\*\*\*\*

**3 JACKET**

**IJ.SUISSEOLYMPIAKOS**

ASSOS is the proud outfitter of the Swiss national team. Now a Federation longsleeve jersey is available. Perfect for cooler summer days, spring and fall.

Sizes XS – S – M – L – XL – XLG – TIR  
Composition\* 85% PES, 15% EA



suisseOlympiakos 13.24.251.99\*\*\*\*

**MILLEINTERMEDIATEJACKET  
\_EV07 NEW**

The successor to the intermediate jacket, we've created a milleCut jacket that will give you the ultimate performance at an amazing price point. Packed full of refinements and using all-new fabrics, we are able to bring you a jacket that we are sure will rarely be left hanging in your wardrobe.

Sizes XS – S – M – L – XL – XLG – TIR  
Composition\* 60%PL, 25%PA, 15%EA



blockBlack 11.30.330.15

holyWhite 11.30.330.57

nationalRed 11.30.330.47

voltYellow 11.30.330.33

**iG.falkenZahn**

Conceived by the ASSOS Werksmannschaft, you can wear this vest throughout the year, especially on cooler days, over a long- or short-sleeve skinFoil or to extend the range of your jersey. The iG.falkenZahn is incredibly versatile!

Tailles XS – S – M – L – XL – XLG – TIR  
Composition\* 44% PA, 26%PL,  
18% PP, 12% EA



blackVolkanga 11.30.320.12

redSwiss 11.30.320.48

whitePanther 11.30.320.56



4 **KNICKERS | SHORTS**

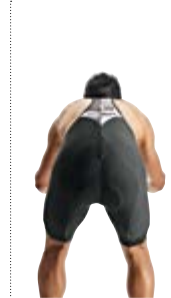
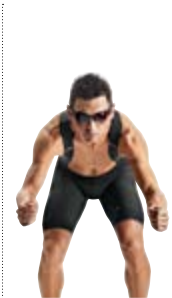
**T.TIBURUSHORTS\_S7**

Performance bibshorts for cooler days in spring and fall, also ideal for Nordic summer days. By combining your T.tiBuru with legwarmers you effectively convert them into tights. It is really a niche product for riders who ride a lot all year round and need fine-tuned climaRange bibshorts.

Sizes XS – S – M – L – XL – XLG – TIR  
Composition\* 55% PA, 24% PL, 17% EA, 4% PU



blackVolkanga 11.10.164.12



équipe\_S7 insert

**TK.TIBURUKNICKER\_S7**

Developed from our T.tiBuruShorts\_S7. When you want something warmer than a short and kneewarmer combination, this is perfect for fall and spring.

Sizes XS – S – M – L – XL – XLG – TIR  
Composition\* 59% PA, 21% PL, 20% EA



blockBlack 11.12.167.15



équipe\_S7 insert

5 **GLOVES | unisex**

**TIBURUGLOVES\_EV07**

The ASSOS multi-purpose glove suitable for most midseason conditions. Wear them when summer gloves do not provide adequate protection, but heavier gloves are too warm. Perfect alone or as a first layer in combination with summerGloves\_S7 to offer extra grip and maximum shock protection.

Sizes XS – S – M – L – XL – XLG  
Composition\* 85% PA, 15% EA



blackVolkanga 13.52.517.12

6 **SOCKS | unisex**

**INTERMEDIATESOCKS\_S7**

Three important characteristics define the intermediateSocks: lightweight but good protection, compact construction, and low compression. These properties result in a very thin, comfortable sock that still offers excellent performance. Ideal for spring, fall and cooler summer days.

Sizes\*\* 0 – I – II  
Composition\* 70% PA, 30% EA



blackVolkanga 13.60.640.12



calypsoBlue 13.60.640.28



voltYellow 13.60.640.31



redSwiss 13.60.640.48



whitePanther 13.60.640.56

**ASSOSOIRES | unisex**

**LEGWARMERS\_ EVO7**

The legWarmers\_evo7 are part of our new generation of evo7 warmers. Though often overlooked, these are a piece of kit that has the most uses. These new leg warmers give you the flexibility of maximum warmth with minimal weight, perfect for cold mornings, protection from wind chill on those long descents, or the cooler days of fall, spring and early winter. They can simply be taken off and placed in a jersey pocket when not

needed. **ALS Tips** – To maximise the performance of these leg warmers, we recommend using them in combination with our T.tiBuruShorts\_S7, giving you warmth with the racing feel of shorts. Arguably one of our most useful and versatile products, the all-new legWarmers\_evo7 are a must for all wardrobes.

Sizes***	0 – I – II
Composition*	62% PA, 20% EA, 18% PL



**blockBlack** 13.80.815.15



**KNEEWARMERS\_ EVO7**

These are a perfect go-to product, ideal for the start of your ride on those chilly mornings or for the whole of your ride during those cooler fall and spring days keep in your pocket to put on when you hit a descent. The all-new kneeWarmers\_evo7 surprise with both its performance and flexibility. Used underneath our S7 summer shorts or with our T.tiBuruShorts\_S7, these are at home in conditions ranging from a cool summer morning to a full fall or spring ride. **ALS Tips** – An ideal

accessory for rides where either the weather forecast or terrain deems that it will get colder, or as an addition to your outfit for the whole ride, these are perfect when you want the added warmth of covered knees but don't need leg warmers or tights. These new kneeWarmers add a lot of flexibility to any outfit they are added too.

Sizes***	0 – I – II
Composition*	80% PA, 20% EA



**blockBlack** 13.80.814.15

**ARMWARMERS\_ EVO7**

The armWarmers\_evo7 are our new generation of arm warmers. A flexible accessory for fall and spring, these are a piece of kit that no cyclist should be without. Designed for use during those cooler moments when wearing a short sleeve jersey, these are very flexible. If you decide to go for our long sleeve skinFoil and falckenZahn combination then they are also not out of place. **ALS Tips** – Small, light and flexible, these are a piece of kit with many different uses. For the

whole ride in spring and fall, or for those cooler moments, early mornings or mountain tops, during the summer. They are quick to put on and small enough to fit in your pocket if not needed. One of our least complicated, yet simultaneously most flexible pieces.

Sizes***	0 – I – II
Composition*	80% PA, 20% EA



**blockBlack** 13.80.813.15

**TOECOVERS\_ S7**

Part of the ASSOS\_S7 Generation for cooler conditions, worn solo over your shoes, or between shoe and overshoe for additional warmth.

Sizes**	0 – I – II
Composition*	51% PA, 21% PP, 18% EA, 10% PU



**blackVolkanga** 13.62.627.12

\*\*\* Warmers: 0 = XS-S, I = M-L, II = XL-XLG



**2** ***tiburu*** SYSTEM OUTFIT  
**4** CLIMARANGE **FALL/SPRING**

°C 10 50 12 15 59 20 68 22 25 77

**als**  
ASSOS  
LAYERING  
SYSTEM

## 1 CAP | unisex

intermediateHeadband\_S7

## 2 BODY INSULATOR unisex

SS.skinFoil\_spring/fall\_evo7  
LS.skinFoil\_spring/fall\_evo7

## 3 JACKET

iJ.intermediate\_S7 Lady  
iG.falkenZahn  
(+ LS.skinFoil\_spring/fall\_evo7)

## 4 KNICKERS + TIGHTS

HL.tiburuTights\_S7 Lady  
hK.laalaLaiKnickers\_S7  
hL.607 Lady\_S5

## 5 GLOVES | unisex

tiburuGloves\_evo7

## 6 SOCKS | unisex

intermediateSocks\_S7

## ASSOISOIRES

toeCovers\_S7



**tiburu**  
SYSTEM OUTFIT

N.

4

CLIMARANGE  
SPRING/FALL







OUTFIT CLIMARANGE TIBURU

## **HL.TIBURUTIGHTS\_S7 LADY**

TIGHTS LADY

These are our latest spring/fall tights for female riders, introducing S7 comfort to those cooler rides. With our all-new leg design and refined blend of fabrics, these tights will keep you out riding as the temperature starts to fall.









OUTFIT CLIMARANGE TIBURU

## HK.LAALALAIKNICKERS\_S7 LADY

KNICKERS LADY

Taking the performance and comfort of the H.laalalaiShorts\_S7 and turning them into knickers for cooler weather is at the heart of this product. The optimal knickers for those cooler summer days or spring/fall conditions.

## 1 CAP | unisex

### INTERMEDIATEHEADBAND\_S7

Ultrathin, low volume, seamless headband, perfect for cool spring and fall days. Flat, one-piece construction allows it to easily fit under your helmet, and hollow polypropylene fibers ensure speedy wicking properties.

Sizes\*\* I – II  
Composition\* 70% PP, 18% PA, 12% EA  
Pics page 38

## 2 BODY INSULATOR | unisex

### SS.SKINFOIL\_SPRING/FALL\_EV07

Seamless construction allows for a pleasing, non-restrictive, total comfort fit. The skinFoil insulators absorb, transport and evaporate moisture quickly and efficiently. Short sleeves.

Sizes\*\*\* 0 – I – II – III  
Composition\* 82% PA, 18% PL

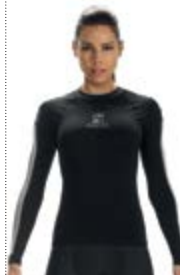


blackVolkanga 13.40.416.15

### LS.SKINFOIL\_SPRING/FALL\_EV07

Seamless construction allows for a pleasing, non-restrictive, total comfort fit. The skinFoil insulators absorb, transport and evaporate moisture quickly and efficiently. Long sleeves.

Sizes\*\*\* 0 – I – II – III  
Composition\* 82% PA, 18% PL



blackVolkanga 13.40.417.15

## 3 JACKET

### IJ.INTERMEDIATE\_S7 LADY

It's a light jacket for spring, fall and cooler summer days. With wind protection on the front panels, it's more functional, lighter, comfortable and offers the perfect Lady fit.

Sizes XS – S – M – L – XL  
Composition\* 79% PL, 10% PA, 6% PU, 5% EA



blackVolkanga 12.30.322.12



redSwiss 12.30.322.48



whitePanther 12.30.322.56



## 4 KNICKERS | TIGHTS

### HK.LAALALAIKNICKERS\_S7 NEW

Taking the performance and comfort of the H.laalalaiShorts\_S7 and turning them into knickers for cooler weather is at the heart of this product. The optimal knickers for those cooler summer days or spring/fall conditions.

Sizes XS – S – M – L – XL  
Composition\* 80% PA, 20% EA



blockBlack 12.12.173.15



Lady\_S7 insert

**4 KNICKERS | TIGHTS****HL.TIBURUTIGHTS\_S7 LADY  
NEW**

These are our latest spring/fall tights for female riders, introducing S7 comfort to those cooler rides. With our all-new leg design and refined blend of fabrics, these tights will keep you out riding as the temperature starts to fall.

Sizes XS – S – M – L – XL  
Composition\* 62% PA, 20% EA, 18% PL



blackBlack 12.14.175.15



Lady\_S7 insert

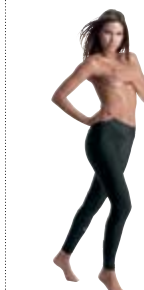
**HL.607 LADY\_S5**

hL.607 Lady is part of the ASSOS\_S5 Generation of ASSOS tights for cooler conditions. Wear the hL.607 Lady as warm tights in fall conditions, at about 8° – 16° C. With Fl.Lady\_S5 insert.

Sizes XS – S – M – L – XL  
Composition\* 70% PA, 16% EA, 14% PES



blackVolkanga 12.14.144.12\*\*\*\*



Fl.Lady\_S5 insert

**5 GLOVES | unisex****TIBURUGLOVES\_EV07**

The ASSOS multi-purpose glove suitable for most midseason conditions. Wear them when summer gloves do not provide adequate protection, but heavier gloves are too warm. Perfect alone or as a first layer in combination with summerGloves\_S7 to offer extra grip and maximum shock protection.

Sizes XS – S – M – L – XL – XLG  
Composition\* 85% PA, 15% EA



blackVolkanga 13.52.517.12

**6 SOCKS | unisex****INTERMEDIATE SOCKS\_S7**

Three important characteristics define the intermediateSocks: lightweight but good protection, compact construction, and low compression. These properties result in a very thin, comfortable sock that still offers excellent performance. Ideal for spring, fall and cooler summer days.

Sizes\*\*\*\* 0 – I – II  
Composition\* 70% PA, 30% EA



blackVolkanga 13.60.640.12



calypsoBlue 13.60.640.28



voltYellow 13.60.640.31



redSwiss 13.60.640.48



whitePanther 13.60.640.56



ASSOISOIRES | unisex

LEGWARMERS\_ EV07

The legWarmers\_ ev07 are part of our new generation of ev07 warmers. Though often overlooked, these are a piece of kit that has the most uses. These new leg warmers give you the flexibility of maximum warmth with minimal weight, perfect for cold mornings, protection from wind chill on those long descents, or the cooler days of fall, spring and early winter. They can simply be taken off and placed in a jersey pocket when not

KNEEWARMERS\_ EV07

These are a perfect go-to product, ideal for the start of your ride on those chilly mornings or for the whole of your ride during those cooler fall and spring days keep in your pocket to put on when you hit a descent. The all-new kneeWarmers\_ ev07 surprise with both its performance and flexibility. Used underneath our S7 summer shorts or with our T.tiBuruShorts\_ S7, these are at home in conditions ranging from a cool summer morning to a full fall or spring ride. ALS Tips – An ideal

ARMWARMERS\_ EV07

The armWarmers\_ ev07 are our new generation of arm warmers. A flexible accessory for fall and spring, these are a piece of kit that no cyclist should be without. Designed for use during those cooler moments when wearing a short sleeve jersey, these are very flexible. If you decide to go for our long sleeve skinFoil and falckenZahn combination then they are also not out of place. ALS Tips – Small, light and flexible, these are a piece of kit with many different uses. For the

TOECOVERS\_ S7

Part of the ASSOS\_ S7 Generation for cooler conditions, worn solo over your shoes, or between shoe and overshoe for additional warmth.

Sizes**	0 – I – II
Composition*	51% PA, 21% PP, 18% EA, 10% PU

needed. ALS Tips – To maximise the performance of these leg warmers, we recommend using them in combination with our T.tiBuruShorts\_ S7, giving you warmth with the racing feel of shorts. Arguably one of our most useful and versatile products, the all-new legWarmers\_ ev07 are a must for all wardrobes.

Sizes***	0 – I – II
Composition*	62% PA, 20% EA, 18% PL

accessory for rides where either the weather forecast or terrain deems that it will get colder, or as an addition to your outfit for the whole ride, these are perfect when you want the added warmth of covered knees but don't need leg warmers or tights. These new kneeWarmers add a lot of flexibility to any outfit they are added too.

Sizes***	0 – I – II
Composition*	80% PA, 20% EA

whole ride in spring and fall, or for those cooler moments, early mornings or mountain tops, during the summer. They are quick to put on and small enough to fit in your pocket if not needed. One of our least complicated, yet simultaneously most flexible pieces.

Sizes***	0 – I – II
Composition*	80% PA, 20% EA
Pics page 41	



blackVolkanga 13.62.627.12



blockBlack 13.80.815.15



blockBlack 13.80.814.15







# 3.4 haBu SYSTEM OUTFIT CLIMARANGE EARLY WINTER



**1 CAP | unisex**

roboCap

**2 BODY INSULATOR  
unisex**

LS.skinFoil\_earlyWinter\_evo7

**3 JACKET**

iJ.haBu

**4 TIGHTS**

LL.habuTights\_S7  
LL.habuTights\_S7 no insert  
+ Shorts: Choose your Comfort

**5 GLOVES | unisex**

earlyWinterGloves\_S7

**6 SOCKS | unisex**

habuSocks\_evo7

**7 OVERSHOES | unisex**

thermoBooties\_S7

**habu**

**SYSTEM OUTFIT**

N.

**B.4**

**CLIMARANGE  
EARLY WINTER**



OUTFIT CLIMARANGE HABU

## IJ.HABU PROFBLACK

JACKET MAN

The profBlack version of the iJ.haBu jacket is arguably the pinnacle of riding jacket design. This is an early winter jacket that will surprise. It's light weight and low volume will leave you warm without the bulk of a traditional winter jacket. A favourite with our riders, it has already cemented its place as an ASSOS icon.





# 3 4 haBu SYSTEM OUTFIT CLIMARANGE EARLY WINTER

## 1 CAP | unisex

### ROBOCAP

The ideal lightweight cap for cold days. It is now made out of warm and very soft RXQ fabric, double-layered around your ears and forehead.

Sizes**	0 – I – II
Composition*	54% PA, 29% PL, 17% EA



blackVolkanga 13.72.722.12

## 2 BODY INSULATOR | unisex

### LS.SKINFOIL\_ EARLYWINTER\_EV07

The skinFoilS are designed to complement your jersey or jacket, making a perfect match! The seamless construction allows for a non-restrictive, comfortable fit. Long sleeves.

Sizes***	0 – I – II – III
Composition*	95%P, 5%EA



blackVolkanga 13.40.418.15

## 3 JACKET

### IJ.HABU NEW COLOR

The profBlack version of the iJ.haBu jacket is arguably the pinnacle of riding jacket design. This is an early winter jacket that will surprise. It's light weight and low volume will leave you warm without the bulk of a traditional winter jacket. A favourite with our riders, it has already cemented its place as an ASSOS icon.

Sizes	S – M – L – XL – XLG – TIR
Composition*	41% PA, 21% PL, 16% PP, 14% EA, 8% PU



blackVolkanga 11.30.312.12

redSwiss 11.30.312.48

whitePanther 11.30.312.56

pitonGreen 13.30.312.63

profBlack 11.30.312.13 NEW

**4 TIGHTS**

**LL.HABUTIGHTS\_S7**

Flexible, warm and comfortable. Our new earlyWinter tights. Based on the S7 insert, they give a new level of comfort. Coming either with or without an insert, you can benefit from their performance and comfort during other early winter activities.

Sizes XS – S – M – L – XL – XLG – TIR  
Composition\* 60% PA, 20% PL, 20% EA



**blackBlack** 11.14.169.15 with insert



**équipe\_S7 insert**



**blackBlack** 11.14.170.15 no insert

**5 GLOVES | unisex**

**EARLYWINTERGLOVES\_S7**

The new earlyWinterGloves\_S7 replaces the earlyWinter 851 glove. We have further reduced the volume and increased its protection level. Perfect for earlyWinter rides.

Sizes XXS – XS – S – M – L – XL – XLG  
Composition\*  
Inside 76% PA, 15% EA, 9% PU  
Outside 78% PES, 11% EA, 11% PU



**blackVolkanga** 13.52.511.12

**whitePanther** 13.52.511.56

**6 SOCKS | unisex**

**HABUSOCKS\_EV07**

Perfect for late autumn and early winter days and in combination with toeCover\_S7, or thermoBooties when you need more protection. Merino wool to keep your feet warm. Polyamide inserts to keep your feet dry. Antibacterial, anti-odor treatment. Texture compression to promote blood circulation.

Sizes\*\*\*\* 0 – I – II  
Composition\* 50% Wool, 35% EA, 10% PP, 5% PA



**blackVolkanga** 13.60.646.12

**7 OVERSHOES | unisex**

**THERMOBOOTIES\_S7**

Beautiful and breathable, this new shoe cover for earlyWinter conditions is wind and cold resistant.

Sizes\*\*\*\* 0 – I – II  
Composition\* 56% PA, 18% PES, 14% EA, 12% PU



**blackVolkanga** 13.62.639.12

\*\*\*\* Sizes: 0 = 35–38, I = 39–42, II = 43–46 | \*\*\*\*\* Booties: 0 = 37–40, I = 41–44, II = 45–48



3.4 haBu CLIMARANGE

SYSTEM OUTFIT  
EARLY WINTER



**1 CAP | unisex**

roboCap

**2 BODY INSULATOR  
unisex**

LS.skinFoil\_earlyWinter\_evo7

**3 JACKET | unisex**

iJ.haBu

**4 TIGHTS**

LL.pompaDour\_S5

**5 GLOVES | unisex**

earlyWinterGloves\_S7

**6 SOCKS | unisex**

habuSocks\_evo7

**7 OVERSHOES | unisex**

thermoBooties\_S7

**haBu**

**SYSTEM OUTFIT**

N.

**B.4**

**CLIMARANGE  
EARLY WINTER**



1 CAP | unisex

ROBOCAP

The ideal lightweight cap for cold days. It is now made out of warm and very soft RXQ fabric, double-layered around your ears and forehead.

Sizes**	0 – I – II
Composition*	54% PA, 29% PL, 17% EA
Pics page 56	

4 TIGHTS

LL.POMPADOUR\_S5

The ASSOS female-specific longlegged bibtights for cold winter riding conditions, featuring ultra-low volume and four-way-stretch airBlock membrane fabric inserts where you need them most. LL.pompaDour is equipped with the ASSOS Lady\_S5 elastic insert, designed to fit perfectly the female form.

Sizes	XS – S – M – L – XL
Composition*	56% PA, 18% PES, 14% EA, 12% PU

5 GLOVES | unisex

EARLYWINTERGLOVES\_S7

The new earlyWinterGloves\_S7 replaces the earlyWinter 851 glove. We have further reduced the volume and increased its protection level. Perfect for earlyWinter rides.

Sizes	XXS – XS – S – M – L – XL – XLG
Composition*	
Inside	76% PA,15% EA,9% PU
Outside	78% PES,11% EA,11% PU

6 SOCKS | unisex

HABUSOCKS\_EV07

Perfect for late autumn and early winter days and in combination with toeCover\_S7, or thermoBooties when you need more protection. Merino wool to keep your feet warm. Polyamide inserts to keep your feet dry. Antibacterial, anti-odor treatment. Texture compression to promote blood circulation.

Sizes****	0 – I – II
Composition*	50% Wool, 35% EA, 10% PP, 5% PA

2 BODY INSULATOR | unisex

LS.SKINFOIL\_ EARLYWINTER\_EV07

The skinFoilS are designed to complement your jersey or jacket, making a perfect match! The seamless construction allows for a non-restrictive, comfortable fit. Long sleeves.

Sizes***	0 – I – II – III
Composition*	95%P, 5%EA



blackVolkanga 12.14.156.12



blackVolkanga 13.52.511.12



blackVolkanga 13.60.646.12



blackVolkanga 13.40.418.15



FL.Lady\_S5 insert



whitePanther 13.52.511.56

7 OVERSHOES | unisex

THERMOBOOTIES\_S7

Beautiful and breathable, this new shoe cover for earlyWinter conditions is wind and cold resistant.

Sizes*****	0 – I – II
Composition*	56% PA, 18% PES, 14% EA, 12%PU

blackVolkanga 13.62.639.12

3 JACKET | unisex

IJ.HABU

iJ.haBu is the ultimate, high performance early-Winter insulator jacket. Features new stratagon-Light and RXQ fabrics. More performance, less fabric volume.

Sizes	S – M – L – XL – XLG – TIR
Composition*	41% PA, 21% PL, 16% PP, 14% EA, 8% PU

Pics page 56

\* Composition: CF \_ Carbon Fiber, CO \_ Cotton, EA \_ Elastane, EOL \_ Elastolefin, PA \_ Polyamide, PL \_ Polyester, PP \_ Polypropylene, PTFE \_ Polytetrafluorethylene, PU \_ Polyurethane, WO \_ Wool

\*\* Head circumference: 0 = 48 – 53, I = 53 – 58 cm, II = 58 – 63 cm

\*\*\* 0 = XS – S, I = M, II = L – XL, III = XLG – TIR

\*\*\*\* Sizes: 0 = 35 – 38, I = 39 – 42, II = 43 – 46

\*\*\*\*\* Booties: 0 = 37 – 40, I = 41 – 44, II = 45 – 48



blackVolkanga 13.62.639.12





# 4 *bonKa* SYSTEM OUTFIT CLIMARANGE WINTER



# 1 CAP | unisex

fuguCap\_S7  
fuguHelm

# 2 BODY INSULATOR unisex

LS.skinFoil\_winter\_evo7

# 4 JACKET

iJ.bonKa Cento  
milleJacket\_evo7

# 3 TIGHTS

LL.bonkaTights\_S7  
LL.milleTights\_S7

# 5 GLOVES | unisex

bonkaGloves\_evo7  
(+shellGloves\_S7)

# 6 SOCKS | unisex

bonkaSocks\_evo7  
fuguSpeer\_S7

# 7 OVERSHOES unisex

winterBooties\_S7  
fuguBooties\_S7

**bonKa**  
SYSTEM OUTFIT

N.



CLIMARANGE  
WINTER







OUTFIT CLIMARANGE BONKA

## MILLEJACKET\_EV07

JACKET MAN

As the natural replacement for the iJ.shaqUno jacket, this new milleJacket\_evo7 uses our next generation fabrics to take winter riding to the next level. With this jacket we feel that we have created the ultimate winter riding jacket.



OUTFIT CLIMARANGE BONKA

## IJ.BONKACENTO PROFBLACK

JACKET MAN

Our ultimate winter jacket had to be added to the profBlack collection because it is in the coldest months that you demand the highest performance and when you'll reap the greatest rewards from sponsoring yourself. An iconic piece within the ASSOS collection, this jacket is testament to the hours of testing and hard work that went into its development. Many call us 'the shorts company', but once you take this jacket out for a ride in the coldest weather you'll see that our winter jackets are pretty good too.





1

CAP | unisex

FUGUCAP\_S7

Our new fuguCap is based on the roboCap and is the perfect winter cap to wear under your helmet.

Sizes**	0 – I – II
Composition*	40% PA, 38% PL, 17% EA, 5% PU

2

BODY INSULATOR | unisex

LS.SKINFOIL\_WINTER\_EV07

The skinFoilS are designed to complement your jersey or jacket, making a perfect match! The seamless construction allows for a non-restrictive, comfortable fit. Long sleeves.

Sizes***	0 – I – II – III
Composition*	72%PA, 24%PP, 4%EA

3

JACKET

IJ.BONKACENTO NEW COLOR

Our ultimate winter jacket had to be added to the profBlack collection because it is in the coldest months that you demand the highest performance and when you'll reap the greatest rewards from sponsoring yourself. An iconic piece within the ASSOS collection, this jacket is testament to the hours of testing and hard work that went into its development. Many call us 'the shorts company', but once you take this jacket out for a ride in the coldest weather you'll see that our winter jackets are pretty good too.

Sizes	XS – S – M – L – XL – XLG – TIR
Composition*	38% PA, 33% PL, 14% EA, 10% PU, 5% PP



whitePanther

13.72.724.56



blackVolkanga

13.40.419.15

FUGUHELM

Our super-engineered head insulator for winter conditions. It has a two-layer construction: a breathable, stretchy inner layer and water-repelling outer layer. Patented dryFast Visor, incorporated ventilation system, eyewear position holders and a permanent sound connection to your wider environment.

Sizes**	0 – I – II
Composition*	49% PA, 24% PL, 13% EA, 11% PU, 2% PP, 1% EOL



blackVolkanga

13.72.716.12



whitePanther

13.72.716.56



blackVolkanga

11.30.315.12



redSwiss

11.30.315.48



calypsoBlue

11.30.315.29



profBlack

11.30.315.13



## 3 JACKET

### MILLEJACKET\_EVO7 NEW

As the natural replacement for the iJ.shaqUno jacket, this new milleJacket\_evo7 uses our next generation fabrics to take winter riding to the next level. With this jacket we feel that we have created the ultimate winter riding jacket at a great price point and are certain that it will soon become one of your go-to items on those colder days.

Sizes XS – S – M – L – XL – XLG – TIR  
Composition\* 45% PA, 39% PL, 16% EA



blockBlack 11.30.329.15

holyWhite 11.30.329.57



nationalRed 11.30.329.47

voltYellow 11.30.329.33

## 4 TIGHTS

### LL.BONKATIGHTS\_S7

The name bonka is synonymous with the ultimate performance in the coldest winter months. The new technological leader for winter riding conditions. Designed to give you maximum protection without any added bulk, keeping you out on the bike on even the coldest winter days.

Sizes XS – S – M – L – XL – XLG – TIR  
Composition\* 70% PA, 18% EA, 12% PL



blockBlack 11.14.171.15



cento\_S7 insert

### LL.MILLETIGHTS\_S7

Our everyday tights for winter riding. You will have no excuses not to ride in the winter. Cut in our comfortFit, they have a price point that makes them ideal to take the abuse of daily riding in winter's worst conditions. Mille\_S7-insert.

Sizes XS – S – M – L – XL – XLG – TIR  
Composition\* 80% PA, 15% EA, 5% PES



blockBlack 11.14.168.15



mille\_S7 insert



5 GLOVES | unisex

BONKAGLOVES\_EV07

Our new glove for maximum pleasure on your winter rides. Set up to prevent heat loss and to protect your hands from cold while maintaining their sensitivity. Technical fabric on the back with airBlock and water-repellent treatment. Multi-density padding with thermostatic function. Abrasion resistant palm with grip function. Low volume neoprene cuff to fit perfectly to avoid heat loss or interference with your jacket.

Sizes	XS – S – M – L – XL – XLG
Composition*	
Outside	50% PA, 50% PL
Inside	100% PL

6 SOCKS | unisex

BONKASOCKS\_EV07

During winter rides, feet and ankles are the body parts most susceptible to the cold. Use the new bonKaSocks\_evo7 to insulate and protect them to the fullest. Merino wool mixed with bioceramic provides superior thermal insulation. Lycra inserts promote blood circulation. Polyamide yarn provides moisture resistance.

Sizes**	0 – I – II
Composition*	55% WO, 25% EA, 20% PA

7 OVERSHOES | unisex

WINTERBOOTIES\_S7

The new winterBooties\_S7 are our perfect over-shoes for your winter rides. They offer airBlock protection and protect from drizzle. Made of three different textiles, seven patterns and six components.

Sizes***	0 – I – II
Composition*	71% PA, 17% EA, 12% PU



blackBlack 13.52.520.15

SHELLGLOVES\_S7

The shellGloves are a great windproof layer to be worn over our different winter gloves. As a very versatile layering tool they offer windchill protection in combination with the insulatorGloves\_L1 in earlyFall morning rides and go till the extreme temperatures of winterPlus as an extra layer over the fuguGloves\_S7 .

Sizes	0 – I – II
Composition*	59% PA, 29% PL, 12% EA



blackVolkanga 13.52.515.12



blackVolkanga 13.60.647.12



whitePanther 13.60.647.56

FUGUSPEER\_S7

fuguSpeer socks are a completely new species of socks: very warm, very light + airBlock protection. For winterPlus riding conditions.

Sizes**	0 – I – II
Composition*	52% PA, 14% PP, 10% PL, 10% EA, 7% PU, 7% EOL



whitePanther 13.60.632.56



blackVolkanga 13.62.628.12

FUGUBOOTIES\_S7

Perfect for cold winter rides in the ASSOS winterPlus temperature range. The fuguBooties replace the winterPlus overshoes.

Sizes***	0 – I – II
Composition*	42% PA, 31% PU, 15% EA, 12%PP



blackVolkanga 13.62.629.12





# **4** *bonKa* SYSTEM OUTFIT CLIMARANGE WINTER



**1 CAP | unisex**

fuguCap\_S7  
fuguHelm

**2 BODY INSULATOR  
unisex**

LS.skinFoil\_winter\_evo7

**4 JACKET**

iJ.pompaDour\_S7

**3 TIGHTS**

LL.pompaDour\_s5

**5 GLOVES | unisex**

bonkaGloves\_evo7  
(+shellGloves\_S7)

**6 SOCKS | unisex**

bonkaSocks\_evo7  
fuguSpeer\_S7

**7 OVERSHOES | unisex**

winterBooties\_S7  
fuguBooties\_S7

**bonKa**  
SYSTEM OUTFIT

N.



CLIMARANGE  
WINTER



## 1 CAP | unisex

### FUGUCAP\_S7

Our new fuguCap is based on the roboCap and is the perfect winter cap to wear under your helmet.

Sizes**	0 – I – II
Composition*	40% PA, 38% PL, 17% EA, 5% PU

Pic page 68

## 2 BODY INSULATOR | unisex

### LS.SKINFOIL\_WINTER\_EV07

The skinFoilS are designed to complement your jersey or jacket, making a perfect match! The seamless construction allows for a non-restrictive, comfortable fit. Long sleeves.

Sizes***	0 – I – II – III
Composition*	72%PA, 24%PP, 4%EA



blackVolkanga 13.40.419.15

## 3 JACKET

### IJ.POMPADOUR\_S7

It's a light jacket for spring, fall and cooler summer days. With wind protection on the front panels, it's more functional, lighter, comfortable and offers the perfect Lady fit.

Sizes	XS – S – M – L – XL
Composition*	79% PL, 10% PA, 6% PU, 5% EA



blackVolkanga 12.30.323.12

whitePanther 12.30.323.56

## 4 TIGHTS

### LL.POMPADOUR\_S5

The ASSOS female-specific longlegged bibtights for cold winter riding conditions, featuring ultra-low volume and four-way-stretch airBlock membrane fabric inserts where you need them most. LL.pompaDour is equipped with the ASSOS Lady\_S5 elastic insert, designed to fit perfectly the female form.

Sizes	XS – S – M – L – XL
Composition*	56% PA, 18% PES, 14% EA, 12% PU



blackVolkanga 12.14.156.12



FI.Lady\_S5 insert

### FUGUHELM

Our super-engineered head insulator for winter conditions. It has a two-layer construction: a breathable, stretchy inner layer and water-repelling outer layer. Patented dryFast Visor, incorporated ventilation system, eyewear position holders and a permanent sound connection to your wider environment.

Sizes**	0 – I – II
Composition*	49% PA, 24% PL, 13% EA, 11% PU, 2% PP, 1% EOL



blackVolkanga 13.72.716.12



whitePanther 13.72.716.56

# CLIMARANGE BONKA LESS THAN 6°C – LADY



## 5 GLOVES | unisex

### BONKAGLOVES\_EV07

Our new glove for maximum pleasure on your winter rides. Set up to prevent heat loss and to protect your hands from cold while maintaining their sensitivity. Technical fabric on the back with airBlock and water-repellent treatment. Multi-density padding with thermostatic function. Abrasion resistant palm with grip function. Low volume neoprene cuff to fit perfectly to avoid heat loss or interference with your jacket.

Sizes	XS – S – M – L – XL – XLG
Composition*	
Outside	50% PA, 50% PL
Inside	100% PL



blackBlack 13.52.520.15

### SHELLGLOVES\_S7

The shellGloves are a great windproof layer to be worn over our different winter gloves. As a very versatile layering tool they offer windchill protection in combination with the insulatorGloves\_L1 in earlyFall morning rides and go till the extreme temperatures of winterPlus as an extra layer over the fuguGloves\_S7 gloves.

Sizes	0 – I – II
Composition*	59% PA, 29% PL, 12% EA



blackVolkanga 13.52.515.12

## 6 SOCKS | unisex

### BONKASOCKS\_EV07

During winter rides, feet and ankles are the body parts most susceptible to the cold. Use the new bonKaSocks\_evo7 to insulate and protect them to the fullest. Merino wool mixed with bioceramic provides superior thermal insulation. Lycra inserts promote blood circulation. Polyamide yarn provides moisture resistance.

Sizes****	0 – I – II
Composition*	55%WO, 25%EA, 20%PA



blackVolkanga 13.60.647.12



whitePanther 13.60.647.56

### FUGUSPEER\_S7

fuguSpeer socks are a completely new species of socks: very warm, very light + airBlock protection. For winterPlus riding conditions.

Sizes****	0 – I – II
Composition*	52% PA, 14% PP, 10% PL, 10% EA, 7% PU, 7% EOL



whitePanther 13.60.632.56

## 7 OVERSHOES | unisex

### WINTERBOOTIES\_S7

The new winterBooties\_S7 are our perfect overshoe for your winter rides. They offer airBlock protection and protect from drizzle. Made of three different textiles, seven patterns and six components.

Sizes*****	0 – I – II
Composition*	71% PA, 17% EA, 12% PU



blackVolkanga 13.62.628.12

### FUGUBOOTIES\_S7

Perfect for cold winter rides in the ASSOS winterPlus temperature range. The fuguBooties replace the winterPlus overshoes.

Sizes*****	0 – I – II
Composition*	42% PA, 31% PU, 15% EA, 12%PP



blackVolkanga 13.62.629.12

\*\*\*\* Sizes: 0 = 35–38, I = 39–42, II = 43–46 | \*\*\*\*\* Booties: 0 = 37–40, I = 41–44, II = 45–48



# *clima* X

TO EXTEND AND PERFECT YOUR CLIMARANGE



## 1 CAP | unisex

rainCap\_S7

## 2 JACKET | unisex

rS.sturmPrinz EVO

sJ.climaSchutz

## 3 KNICKERS & TIGHTS unisex

hK.sturmNuss

hL.sturmNuss

## 4 GLOVES | unisex

rainGloves\_evo7

## NO EXCUSES.

RIDING IN THE RAIN CAN BE FUN IF YOU WEAR THE RIGHT EQUIPMENT AND HAVE A CUP OF HOT TEA AND A BATH WAITING FOR YOU AT THE OTHER END.

## WE OFFER THE ULTIMATE CYCLING-SPECIFIC RAINGEAR SOLUTION:

CLIMA-X – PERFECT FOR TRAINING AND RACING UNDER THE HARSHTEST CONDITIONS. THERE IS A LOT OF GOOD RAINGEAR OUT THERE, PERFECT FOR WALKING THE DOG OR A BIT OF TOURING AROUND. BUT SOMETIMES YOU NEED MORE. FOCUS ON WHAT YOU LOVE TO DO: CYCLING!



**clima**<sup>x</sup>  
SYSTEM OUTFIT

ACTIVE  
BREATHABLE

**assos**  
OFFSWITZERLAND  
CYCLING BODY RESEARCH CREATION & REFINEMENTS

WATER  
REPELLENT  
TEXTILE  
TECHNOLOGY





**1 CAP | unisex**

rainCap\_S7

**2 JACKET | unisex**

rS.sturmPrinz EVO

sJ.climaSchutz

**3 KNICKERS & TIGHTS  
unisex**

hK.sturmNuss

hL.sturmNuss

**4 GLOVES | unisex**

rainGloves\_evo7

***clima*X**

**SYSTEM OUTFIT**

ACTIVE  
BREATHABLE

**asos**  
OFFSWITZERLAND

CYCLING BODY RESEARCH CREATION & REFINEMENTS

WATER  
REPELLENT  
TEXTILE  
TECHNOLOGY



### 1 CAP | unisex

#### RAINCAP\_S7

It's a light cycling cap made with slightly elastic anti-rain TRITON fabric, featuring taped seams. Use it as an insulation / protection cap in harsh weather conditions.

Sizes	0 – I – II
Composition*	60% PA, 19% PES, 13% PTFE, 8% EA



blackVolkanga 13.70.718.12

### 2 JACKET | unisex

#### RS.STURMPRINZ

The first ASSOS cycling-competition-specific high performance rainShell jacket. In cold winter riding conditions, it can be used as a heavy-duty insulator shell, wearing it over your interactive iJ.tiBuru. lollyRed ensures that you are not overlooked even in the worst weather conditions!

Sizes	XS – S – M – L – XL – XLG – TIR
Composition*	59% PA, 29% PL, 12% EA



blackVolkanga 13.32.327.12



lollyRed 13.32.327.49



### 3 KNICKERS & TIGHTS | unisex

#### HK.STURMNUSS

Cycling-specific high performance rainShell knickers – an ASSOS first! The hK.sturmNuss is a new genre of low volume, high performance rain gear specifically created for performance cycling, or as the ideal companion for long-distance touring.

Sizes	XS – S – M – L – XL – XLG – TIR
Composition*	59% PA, 29% PL, 12% EA



blackVolkanga 11.12.150.12



#### HL.STURMNUSS

These highly functional rainpants now also come in an extended version. Just like its little brother – the hK.sturmNuss – it is designed to offer year-round protection, especially on cooler days.

Sizes	S – M – L – XL – XLG – TIR
Composition*	59% PA, 29% PL, 12% EA



blackVolkanga 11.14.153.12



### 4 GLOVES | unisex

#### RAINGLOVES\_EV07

The perfect gloves for rainy conditions, our evolution of the first ASSOS rainGloves, featuring improved ergonomics, low volume neoprene material and design. Wear them alone in mild temperatures, or in combination with the new tiBuruGloves\_evo7 in extreme conditions of cold and rain.

Sizes	XS – S – M – L – XL – XLG
Composition*	92% PA, 8% EA



blackVolkanga 13.52.519.12

### ASSOISOIRES | unisex

#### SV.EMERGENCYVEST

Micro-volume chest protection. Engineered for racing applications.

Sizes	XS – S – M – L – XL – XLG – TIR
Composition*	83% PA, 17% EA



whitePanther 13.34.324.56\*\*\*



## ASSOSOIRES | unisex

### SV.BLITZFEDER NEW COLOURS

Ultra-light, ultra-compact shell vest. Wear it whenever you need light protection or insulation against the elements. For example, from wind, light rain showers or chill.

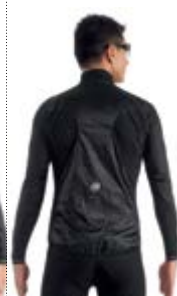
Sizes XS – S – M – L – XL – XLG – TIR  
Composition\* 95% PA, 5% EA



whitePanther 13.34.307.56\*\*



blackSeries 13.34.307.18



safetyYellow 13.34.307.37



### SJ.BLITZFEDER NEW COLOURS

Our lightest long-sleeve shell, in terms of both volume and protection level. The perfect, light shell jacket for training or racing during the warmer, drier months of the year.

Sizes XS – S – M – L – XL – XLG – TIR  
Composition\* 95% PA, 5% EA



whitePanther 13.32.313.56\*\*



blockBlack 13.32.313.18



safetyYellow 13.32.313.56





# OFFROAD RALLY

**FAST & TOUGH MTB**



## BODY INSULATOR | unisex

NS.skinfoilSummer\_evo7

## 1 JERSEY

SS.rallytrekkingJersey\_evo7  
SS.capeepicXCJersey\_evo7

## ARMWARMER | unisex

armWarmers\_evo7  
armProtectors\_evo7

## 2 SHORTS

T.rallyShorts\_S7  
H.rallycargoShorts\_S7 unisex  
+ H.rallyBoxer\_S7 unisex

## GLOVES | unisex

summerGloves\_S7

## LEGWARMER | unisex

legWarmers\_evo7

## OVERSHOES | unisex

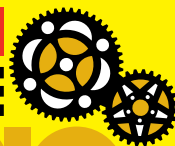
summerBootie\_S7

OFFROAD **RALLY**  
SYSTEM OUTFIT

**OFFICIAL  
EQUIPMENT**

ABSA

**CAPE  
EPIC**









A cyclist wearing a black and red jersey and a black helmet is riding a brown mountain bike on a gravel path. The path is surrounded by a stone wall and a river in the background. The scene is set in a mountainous area with rocky terrain and some greenery.

SYSTEM OUTFIT OFFROAD RALLY

## **H.RALLYCARGOSHORTS\_S7**

OFFROAD SHORTS MAN

Our all-new H.rallycargoShorts\_S7 are packed with nothing but the most advanced engineering concepts and the highest performing fabrics.

When used in conjunction with our H.rallyBoxers\_S7, they bring S7 generation comfort and performance in a casual package to meet the demands of the most advanced mountain bikers.



## 1 JERSEYS

### SS.CAPEPICXCJERSEY\_ EV07

ASSOS partnered with Cape Epic – the untamed, original ultimate MTB stage race – as their technical apparel partner of choice. Along with race support, the partnership also entails providing the leader jerseys for all the different categories.

This jersey is ideally suited for the crosscountry type of MTB riding.

Sizes XS – S – M – L – XL – XLG – TIR  
Composition\* 66% PL, 25% PA, 9% EA



holyWhite 53.20.200.57

nationalRed 53.20.200.47



pitonGreen 53.20.200.63

### SS.RALLYTREKKING JERSEY\_ EV07

Our MTB-specific high performance trekking jersey – light, anatomically pre-shaped and protective. Based on \_S7 but adapted to MTB ergonomics, taking into account bike and rider positioning, and the MTB-specific application. It is the first ASSOS product to be sold only in combination with an ASSOS skinFoil\_S7 base-layer. Why? Because the rider needs it, and this combination ensures maximum performance.

Sizes XS – S – M – L – XL – XLG – TIR  
Composition\* 84% PA, 12% EA, 4% PL



blockBlack 53.20.201.15

nationalRed 53.20.201.47



pitonGreen 53.20.201.63

NS.skinFoil\_summer\_ev07,  
more informations page 14



# SYSTEM OUTFIT OFFROAD RALLY – MAN



## 2 SHORTS

### H.RALLYBOXERS\_S7 NEW

With the all-new H.rallyBoxers, you will not only get next generation comfort but also the additional security of the impactPads. Wear them as a first layer underneath your H.rallyCargoShorts\_S7.

Sizes XS – S – M – L – XL – XLG – TIR  
Composition\* 78% PA, 22% EA



blockBlack 51.10.102.15



mille\_S7 insert

### H.RALLYCARGOSHORTS\_S7 NEW

Our all-new H.rallyCargoShorts\_S7 are packed with nothing but the most advanced engineering concepts and the highest performing fabrics. When used in conjunction with our H.rallyBoxer\_S7, they bring S7 generation comfort and performance in a casual package to meet the demands of the most advanced mountain bikers.

Sizes XS – S – M – L – XL – XLG – TIR  
Composition\* 85% PA, 15% EA



blockBlack 51.10.103.15



nationalRed 51.10.103.47



pitonGreen 51.10.103.63

### T.RALLYSHORTS\_S7

ASSOS is known as the shorts company. So introducing our first MTB-specific high performance shorts could be nothing less than extraordinary. We believe we have succeeded, creating MTB shorts the likes of which did not exist before the ASSOS offroadRally line.

Many innovations are at the core of these shorts. What makes them special is their slimFit, designed with the racer in mind. The impactPads are designed to help protect you without sacrificing riding comfort or inhibiting performance.

Sizes XS – S – M – L – XL – XLG – TIR  
Composition\* 55% PA, 45% EA



blockBlack 51.10.100.15



offroadRally insert





# OFFROAD

# RALLY

## FAST & TOUGH MTB

**BODY INSULATOR | unisex**

NS.skinfoilSummer\_evo7

**1 JERSEY**

SS.rallytrekkingJersey\_evo7  
SS.capeepicXCJersey\_evo7

**ARM WARMER | unisex**

armWarmers\_evo7  
armProtectors\_evo7

**2 SHORTS**

T.rallyShorts\_S7  
H.rallycargoShorts\_S7 unisex  
+ H.rallyBoxer\_S7 unisex

**GLOVES | unisex**

summerGloves\_S7

**LEG WARMER | unisex**

legWarmers\_evo7

**OVERSHOES | unisex**

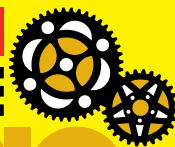
summerBooties\_S7

OFFROAD **RALLY**  
SYSTEM OUTFIT

**OFFICIAL  
EQUIPMENT**

ABSA

**CAPE  
EPIC**

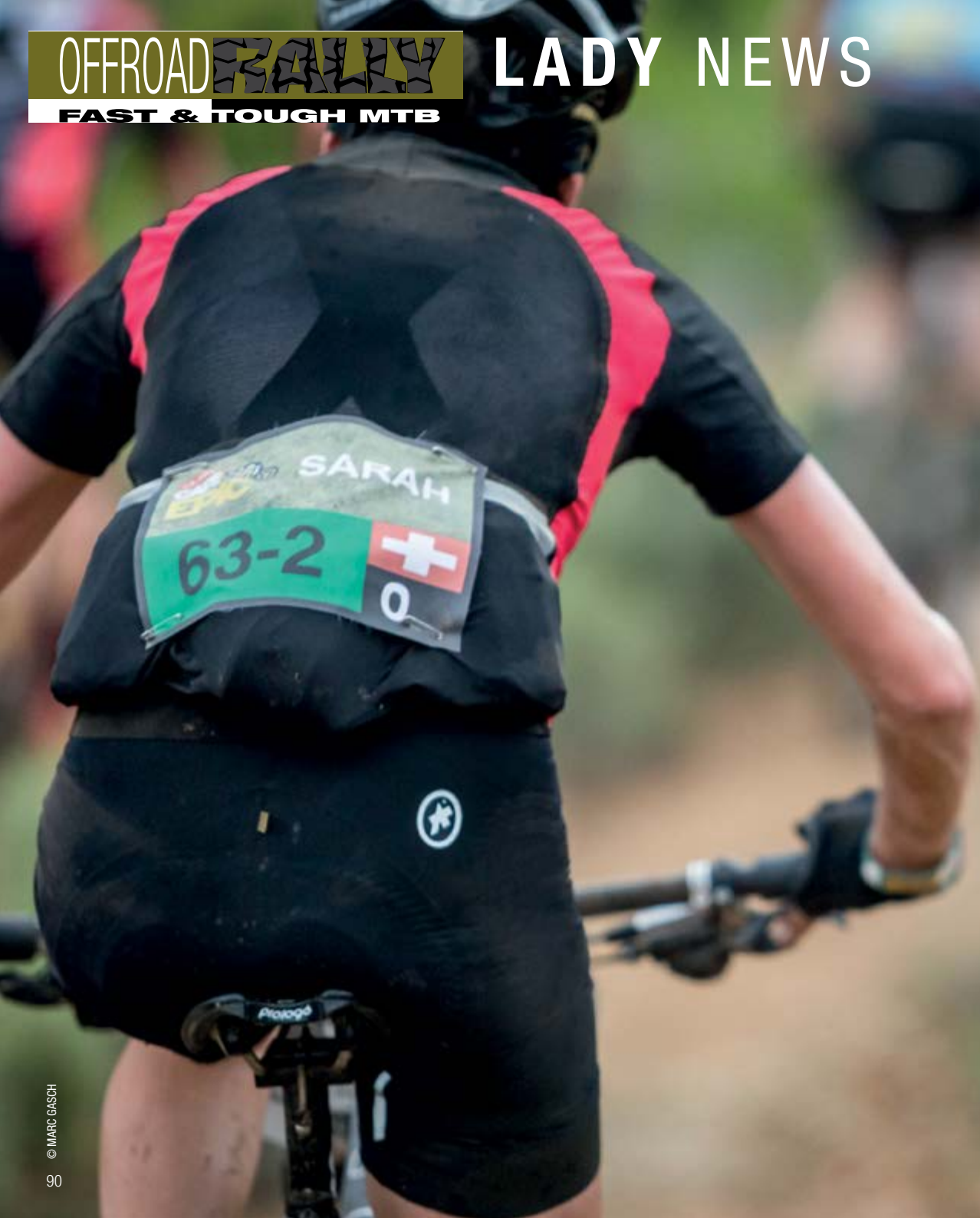




OFFROAD **RALLY**

FAST & TOUGH MTB

# LADY NEWS



A female mountain biker is shown in action, riding down a dirt trail. She is wearing a brown leather jacket, a black helmet, and a green and black jersey. Her bike has a number plate that reads '65-2'. The background is a hilly, wooded area with green bushes and trees. The overall scene is dynamic and captures the essence of off-road cycling.

SYSTEM OUTFIT OFFROAD RALLY

## T.RALLYSHORTS\_S7 LADY

OFFROAD SHORTS LADY

Using many of the innovative features found in the male version — impactPads, regularFit, more robust material — plus a female mountain-bike-specific cut, these shorts finally allow a woman to experience superior ASSOS comfort while riding her mountain bike.



OFFROAD **RALLY**

FAST & TOUGH MTB

# LADY NEWS







SYSTEM OUTFIT OFFROAD RALLY

## **SS.RALLYTREKKINGJERSEY\_EV07 LADY**

OFFROAD JERSEY LADY

An all-new women's MTB jersey, the SS.rallytrekkingJersey sets the benchmark for off-road performance clothing with a female-specific cut. With a large mesh back to give better performance on the hottest climbs, it comes with a skinFoil for added UV protection.



SYSTEM OUTFIT OFFROAD RALLY

## **SS.CAPEEPICXCJERSEY\_EV07 LADY**

OFFROAD JERSEY LADY

Fast and Tough, the motto of our offroadRally collection, is embodied in this product. Light and comfortable, this jersey not only celebrates one of the toughest mountain bike races, it also sets a new standard in women's specific offroad apparel.





1 JERSEYS

SS.RALLYTREKKINGJERSEY\_ EV07 LADY NEW

An all-new women's MTB jersey, the SS.rallytrekkingJersey sets the benchmark for off-road performance clothing with a female-specific cut. With a large mesh back to give better performance on the hottest climbs, it comes with a skinFoil for added UV protection.

Sizes	XS – S – M – L – XL
Composition*	84% PA, 12% EA, 4% PL



blockBlack 52.20.203.15



nationalRed 52.20.203.47



pitonGreen 52.20.203.63



SS.CAPEPICXCJERSEY\_ EV07 LADY NEW

**Fast and Tough**, the motto of our offroadRally collection, is embodied in this product. Light and comfortable, this jersey not only celebrates one of the toughest mountain bike races, it also sets a new standard in women's specific offroad apparel.

Sizes	XS – S – M – L – XL
Composition*	66% PL, 25% PA, 9% EA



holyWhite 52.20.202.57



nationalRed 52.20.202.47



pitonGreen 52.20.202.63



2 SHORTS

T.RALLYSHORTS\_S7 LADY NEW

Using many of the innovative features found in the male version — impactPads, regularFit, more robust material — plus a female mountain-bike-specific cut, these shorts finally allow a woman to experience superior ASSOS comfort while riding her mountain bike.

Sizes	XS – S – M – L – XL
Composition*	50% PA, 50% EA



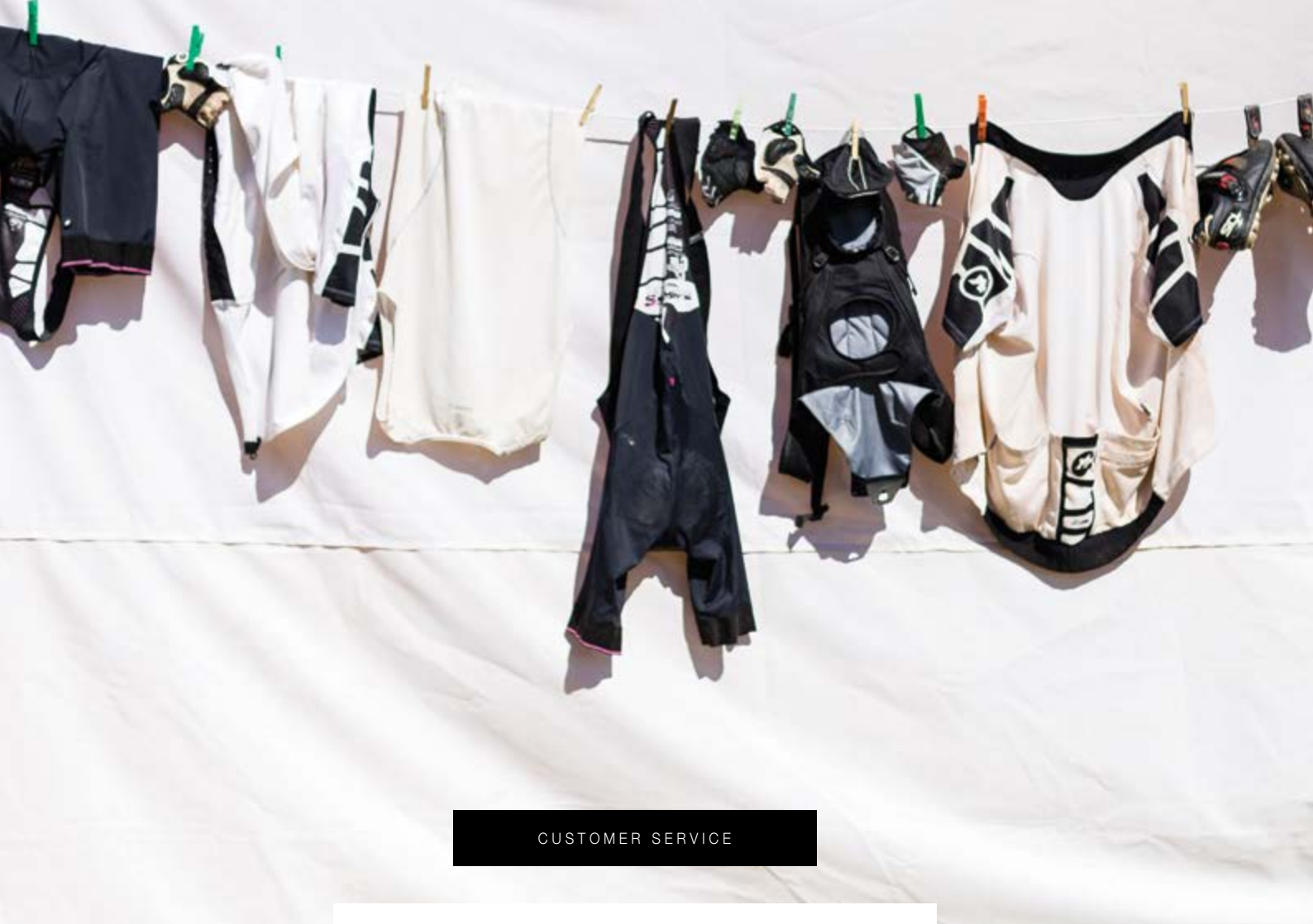
blockBlack 52.10.101.15



Lady\_offroadRally insert







CUSTOMER SERVICE

## CARE INSTRUCTIONS

ENSURE THE BEST POSSIBLE SERVICE



We know that ASSOS products are an investment; the time that has been taken to develop them is what you pay for. With that in mind we want to make sure that everyone who is part of the ASSOS family, who invests in ASSOS comfort, gets customer service that equals the performance of our products – [www.assos.com/customer-service/product-care](http://www.assos.com/customer-service/product-care)

## SKINREPAIR GEL

Suitable for relieving discomfort and repairing skin damage caused by friction of the saddle against the genital area. Effective, long-acting performance due to the use of natural ingredients. Anti-irritant, skin normalizing action complements the body's normal tissue repair processes. Formula based on natural ingredients.

Tube content 75 ml



13.90.912.99

## CHAMOIS CRÈME

ASSOS Chamois Crème makes long rides more enjoyable and comfortable. It reduces friction and prevents bacterial and fungal infections on your skin. Apply a thin layer of Chamois Crème to your skin and padded insert before your ride.

Jar content 140 ml



13.90.901.99

## ACTIVE WEAR CLEANSER

When laundering ASSOS clothing, we recommend hand washing or gentle machine washing, using ASSOS Active Wear Cleanser. ASSOS Active Wear Cleanser is gentle on elastic fibers, pH neutral, neutralizes odors, enhances textile breathability and maintains sharp colors.

Bottle contents 300 ml / 1,000 ml



13.90.903.99 = 300 ml / P13.90.904.99 = 1,000 ml

## WASH

- Washing a garment means putting stress on fabric and seams. Therefore, wash cycling garments separately from other clothes or accessories to prevent friction.
- Before washing, turn the garments inside out (seams on the outside).
- Machine washing is possible, but always use a wash bag, the delicate cycle and lukewarm water (max. 30°C).
- Do not use bleaches and or softeners. Use only a mild liquid detergent, such as ASSOS Active Wear Cleanser.
- Do not soak, wring or rub. Do not spin after washing. To remove excess water from your garment, squeeze gently by hand.
- Do not tumble dry. Dry garments flat or hang dry.

## ACTIVE WEAR CLEANSER

For laundering, we recommend machine washing max. 30°C using ASSOS Active Wear Cleanser or a mild liquid detergent. ASSOS Active Wear Cleanser is a mild, PH-neutral detergent developed specifically for the needs of functional elastic fabrics. It prevents harmful bacterial formation and odor buildup, enhances textile breathability and maintains sharp color sublimation.



# EYE PROTECTION – ZEGHO

## ZEGHO EYEPROTECTION

Nothing less than the redefinition of cycling-specific high performance eyeProtection, produced in an exclusive joint engineering venture between ASSOS Centro Studio and Carl Zeiss Vision Sunlens. With tunnelView lens technology, patent pending.



zegho werksmannschaft 63.99.100.99

## ZEGHO WERKSMANNSCHAFT

Black/white frame, grey glasses with tunnelView



zegho noire 63.99.101.99

## ZEGHO NOIRE

Black frame, grey glasses with tunnelView



## ZEGHO AMPLIFY

Black/white frame, yellow glasses with tunnel-View



zegho amplify 63.99.102.99



## ZEGHO CRYSTAL

Following the successful launch of the original zegho models, we introduce a new variant: crystal. Technically, it's based on the original zegho but it features a clear lens and frame, which gives the crystal version a clean, minimalist look while still offering good protection from wind, dust and debris.



zegho crystal 63.99.104.99





## TECHNOLOGY

**ASSOS**  
**TV**  
**zOd.Tec** +  
275 G – superleggera  
**clickFace**

**zeropressure**  
**RI.PEL**  
100% UV +elements  
**HEADGRIP**  
**precision-made**

A unique joint engineering venture between ASSOS CENTRO STUDIO and Carl Zeiss Vision sunlens that redefines cycling-specific high-performance eye protection.

Carl Zeiss Vision TV – tunnelView lens technology. Custom made for zegho. Patent pending. 180-degree vision field of view, enabling you to “feel” your surroundings. Zero optical distortion, certified optical class 1: Superior.

27,5 grams

Proadaptive skinTouch material ensures a stable fit, minimizing movement under sweaty, shock-filled conditions.

Adaptive, ultraflex composite frame, mathematically designed to calibrate the perfect ratio of material to shape. Hydrophobic self-clearing lens technology.

100% UV protection.

Detachable wraparound elastic strap, ideal for running and/or air jumps (duathlon, mtb, bmx).

By hand in Italy, by dedicated eyewear specialists, one by one in limited numbers, all located within a 100-km radius of ASSOS Headquarters, Switzerland.





## ASSOS IS FF-1

OFFICIAL TEAM SUPPLIER

Cycling plays an important role in maintaining the physical and mental fitness of team members, making ASSOS the natural partner to supply the team with high tech cycling apparel.



OFFICIAL TEAM SUPPLIER



**AMG**  
**PETRONAS**  
FORMULA ONE™ TEAM





ASSOS SPECIAL PROJECTS

## ASSOS IS FF-1

OFFICIAL TEAM SUPPLIER

# THE DEVELOPMENT OF CYCLING TECHNOLOGIES INSPIRED BY FORMULA ONE™, AS WELL AS THE APPLICATION OF CYCLING EXPERIENCE TO FORMULA ONE™

### ASSOS IS FF-1

Formula One™ is the most advanced sport in the world, where fractions of a second make the crucial difference.

Innovate, don't imitate. How do you develop the ultimate cycling clothing? Don't imitate, innovate! We have always tried to look outside of the cycling industry to get new ideas and technologies. So, naturally, when the opportunity arose to collaborate with a team at the cutting edge of the most technologically advanced sport in the world, we jumped at it. With the best engineering minds in the world now riding in ASSOS clothing, who knows what is possible in the future?



## DEVELOPING AND MAINTAINING BOTH PHYSICAL AND MENTAL FITNESS THROUGH CYCLING.

Our collaboration with the MERCEDES AMG PETRONAS Formula One™ Team is a way for us to tap into some of the best engineering minds in the world, creating a licensed product collection and ultimately working towards a new era of performance and comfort on the bike.

OFFICIAL TEAM SUPPLIER



**AMG**  
**PETRONAS**  
FORMULA ONE™ TEAM





# SPECIAL PROJECTS – ASSOS IS FF-1

## T.FF\_1.SHORTS\_S7 NEW

Flawlessly combining our passion for bikes and cars, these T.FF\_1Shorts\_S7 are more than just an amalgamation of our T.campionissimo\_S7 and T.equipe\_S7. Now refined and with numerous specific design features, these shorts really are for the true racer.

Sizes	XS – S – M – L – XL – XLG – TIR
Composition*	55% PA, 35% EA, 10% PL



blockBlack 41.10.147.15



equipe\_S7 insert

## SS.FF\_1.JERSEY\_EV07 NEW

Taking the new ASSOS standard summer jersey to the next level, the SS.FF\_1Jersey\_evo7, created in collaboration with the MERCEDES AMG PETRONAS Formula One Team, sets a new benchmark for summer jerseys.

Sizes	XS – S – M – L – XL – XLG – TIR
Composition*	42% PA, 23% PP, 19% EA, 16% PL



FF\_1Green 11.20.260.66



## FF\_1.EMERGENCY-WINDVEST\_EV07 NEW

The ultimate accessory for the racer who wants lightweight protection, or an all-year rider wanting to be seen on those dark roads, this is a must for any ASSOS wardrobe.

Sizes	XS – S – M – L – XL – XLG – TIR
Composition*	84% PA, 16% EA



FF\_1Grey 13.34.328.11



## FF\_1.SOCKS\_EV07 NEW

Creating harmony within your outfit, these socks are the ultimate finishing touch to any Works\_Team combination. Just as ASSOS and MERCEDES AMG PETRONAS Formula One Team collaborate, so too do these socks.

Sizes**	0 – I – II
Composition*	70% PA, 30% EA



left sock blockBlack / right sock FF\_1Green 13.60.653.99



## FF\_1.CAP\_EV07 NEW

Sizes**	0 – I – II
Composition*	70% CO, 30% PES



13.70.725.99

\* Composition: CF \_ Carbon Fiber, CO \_ Cotton, EA \_ Elastane, EOL \_ Elastolefin, PA \_ Polyamide, PL \_ Polyester, PP \_ Polypropylene, PTFE \_ Polytetrafluorethylene, PU \_ Polyurethane, WO \_ Wool  
\*\* Sizes: 0 = 35–38, I = 39–42, II = 43–46



## T.WORKS\_TEAMSHORTS\_S7 NEW

Based on the T.neoPro\_S7 platform, this is the ultimate souvenir for any fan of either sport, not just for ASSOS aficionados. These shorts mark the day that the most advanced motorsport in the world meets the most advanced cycling shorts in the world.

Sizes XS – S – M – L – XL – XLG – TIR  
Composition\* 70% PA, 18% EA, 12% PL



blockBlack 33.16.169.99



neoPro\_S7 insert

## SS.WORKS\_TEAMJERSEY\_ EV07 NEW

Traditionally ASSOS has always looked outside of the cycling world to find its next technological advances. So by working with a team at the pinnacle of the world of motorsport, we are excited about the scope for achievement.

Sizes XS – S – M – L – XL – XLG – TIR  
Composition\* 97%PL, 2%PA, 1%EA



FF\_16Green 33.26.310.99







ASSOS SPECIAL PROJECTS

## ÉQUIPE EXPLOIT

ASSOS WERKSMANNSCHAFT

This dedicated team of professional cyclists evaluates every piece of ASSOS cycling apparel, under all possible conditions. ASSOS products are made by people who live the mission of total comfort in the saddle.









## SPECIAL PROJECTS – ÉQUIPE EXPLOIT

### GOOMAH G733

The GOOMAH G733 is the successor of the G731. This is the one and only official ASSOS racing bike, the ultimate ASSOS rider Assosoire. The G733 is a custom-made joint development venture between ASSOS Centro Studio, équipe eXploit and the Swiss carbon frame engineering group, GOOMAH.

Sizes XS – S – M – L – XL  
Composition\* 97% Carbon, 3% Aluminium



eXploit Team graphic 17.04.03.99



### ASSOS CYCLINGSLIPPERS G1

The G1 are precisely handcrafted, melding extreme high tech with traditional artisanal shoe manufacturing. G1 uses real kangaroo leather for their supreme softness and excellent ability to adapt to each wearer's foot. BOA technology closure system. Micro-adjustable, pressure-equalizing closure. The WOW effect of G1 occurs from the transfer of power that flows from the form of its construction.

Sizes 36 – 46.5  
available in full and half sizes



black / white & gold deco 17.03.03.99



### ASSOS JINGO HELMET

Made for ASSOS exclusively by the team's tech partner, Ranking. JINGO impressed us with its extreme light weight (170 g) small volume, ergonomically correct shape, excellent ventilation and overall clean, great look.

Sizes 0 = S/M – I = M/L – II = L/XL



black matte / white & gold deco 17.01.07.99





# EXPLOIT DELLE ALPI

# *La Campionissimo*

GRAN FONDO INTERNAZIONALE

ASSOS SPECIAL PROJECTS

## LA CAMPIONISSIMO

THE TOUGHEST, THE NICEST

**RIDE THE MOST ICONIC ROADS OF THE GIRO D'ITALIA IN ONE OF THE YEAR'S TOUGHEST YET IRREFUTABLY ONE OF THE MOST BEAUTIFUL GRAN FONDOS, WHERE FOR ONE WEEKEND ASSOS TAKES OVER THE SMALL ALPINE TOWN OF APRICA, ITALY.**

We've all ridden spectacular roads and taken part in gran fondos. But we have not all ridden the ASSOS Gran Fondo La Campionissimo, where an unrivalled cycling experience is guaranteed. Come to Northern Italy's Aprica, a stylish ski resort overlooking the beautiful Valtellina to experience the ASSOS Gran Fondo, where everyone will become a champion of champions, everyone will be La Campionissimo.

Taking place on some of the hardest, yet most rewarding climbs in the region, you'll experience the roads on which cycling history has been written time and time again. The Passo

Gavia, Passo Mortirolo and Passo Santa Cristina have been the battlegrounds for the world's best riders on multiple occasions. Now it's your turn. Come to Aprica in late June and you too can be a part of this.

More than just a cycling event, Aprica becomes the centre of the ASSOS world over this late-June weekend of La Campionissimo. A weekend when the ASSOS experience is there for the taking, the enjoyment and the satisfaction alongside the local delights that this mountainous region of Northern Italy has to offer.

WHEN? JUNE  
PLEASE REGISTER NOW AT  
[www.lacampionissimo.com](http://www.lacampionissimo.com)







Sponsor Yourself<sup>TM</sup>

 **QSSOS**  
OF SWITZERLAND

CYCLING BODY RESEARCH CREATION & REFINEMENTS

OUR PRODUCTS

## SIGNATURE

THE COLLECTION





# SIGNATURE COLLECTION

## T\_SHIRT “SPONSOR YOURSELF” LS MAN

Our new sporty yet elegant black longsleeve jersey “Sponsor yourself” with imprint in three fresh new colours: ametista, voltYellow and pitonGreen.

Sizes	S – M – L – XL – XLG – TIR
Composition*	92% CO, 8% EA



ametista 43.20.223.65

voltYellow 43.20.223.33

pitonGreen 43.20.223.63



holyWhite 43.20.223.57



## T\_SHIRT “MADE IN CYCLING” SS MAN

A classic and timeless jersey. Simple design, top quality. Male version.

Sizes	S – M – L – XL – XLG – TIR
Composition*	92% CO, 8% EA



blockBlack 41.20.209.15

holyWhite 41.20.209.57

pitonGreen 41.20.209.63



nationalRed 41.20.209.47

ametista 41.20.209.65

## T-SHIRT “MADE IN CYCLING” SS LADY

A classic and timeless jersey. Simple design, top quality. Female version.

Sizes	XS – S – M – L – XL
Composition*	92% CO, 8% EA



**blockBlack** 42.20.210.15



**holyWhite** 42.20.210.57



**pitonGreen** 42.20.210.63



**nationalRed** 41.20.210.47



**ametista** 41.20.210.65

## POLO CORPORATE SS MAN

Sizes	S – M – L – XL – XLG – TIR
Composition*	92% CO, 8% EA



**blockBlack** 41.20.214.15



**holyWhite** 41.20.214.57



## POLO CORPORATE SS LADY

Sizes	XS – S – M – L – XL
Composition*	92% CO, 8% EA



**blockBlack** 42.20.215.15





# SIGNATURE COLLECTION

## POLO SS SWISSFED MAN

Sizes	S – M – L – XL – XLG – TIR
Composition*	92% CO, 8% EA



41.20.216.99

## POLO SS SWISSFED LADY

Sizes	XS – S – M – L – XL
Composition*	92% CO, 8% EA



42.20.217.99

## TRACKJACK SIGNATURE BLOCKBLACK

Sporty yet elegant casual jacket. Its timeless style can be combined in many ways.

Sizes	XS – S – M – L – XL – XLG – TIR
Composition*	87% PL, 13% EA



43.30.300.15

## TRACKSHORT SIGNATURE BLOCKBLACK

Sporty yet elegant leisure shorts. Their timeless style can be combined in many ways.

Sizes	XS – S – M – L – XL – XLG – TIR
Composition*	87% PL, 13% EA



43.10.100.15

## TRACKPANTS SIGNATURE BLOCKBLACK

Sporty yet elegant leisure pants. Their timeless style can be combined in many ways.

Sizes XS – S – M – L – XL – XLG – TIR  
Composition \* 87% PL, 13% EA



blockBlack 43.10.101.15

## FELPAPANTS SWISSFED

Sizes XS – S – M – L – XL – XLG – TIR  
Composition\* 100% CO



blockBlack 43.10.102.15

## FELPAJACK ASSOS WERKSMANNSCHAFT

Sizes XS – S – M – L – XL – XLG – TIR  
Composition\* 100% CO



blockBlack 43.30.301.15



## FELPAJACK SWISSFED

Sizes XS – S – M – L – XL – XLG – TIR  
Composition\* 100% CO



holyWhite 43.30.301.57





# SIGNATURE COLLECTION

## ELLIPSESTICKER 3D

ASSOS oval with a shiny, slightly raised appearance.

Sizes one size



16.51.04.99

## FLIPFLOP ASSOS

Well-shaped flip-flops in the typical ASSOS design. Matte black look with a discreet amethyst edging.

Sizes 35–45



Black /amethyst 16.78.02.10

## OFFROADRALLY NOTEBOOK

Your year-round companion for daily use.



16.64.03.99

## ASSOS NOTEBOOK SIGNATURE

Black notebook featuring our road cyclist logo. This larger, black-covered notebook will give you sufficient space and ample opportunity to remind yourself of your passion for cycling.



16.64.04.99

## ASSOS PHONECOVER

Simple and unpretentious ASSOS phone cover with a gorgeous look and feel.

Sizes	
iPhone 5	16.82.02.15
iPhone 6	16.82.03.15
iPhone 6 Plus	16.82.04.15



blockBlack

## ASSOS PENSET

comes with 10 ASSOS pens.



white 16.61.02.99

## ASSOS WATERBOTTLE

Simple black design with the white ASSOS oval. 500 ml capacity.



13.92.910.10

## ASSOS LOUNGEPAANTOFFEL

A useful promotional gift, good for customers to use in the ASSOS-in-store dressing room, and just plain comfortable for lounging in at home after a long day's ride.

Sizes one size



black/white 16.78.01.99

## ASSOS UMBRELLA

ASSOS branded umbrella. Perfect for spectating or post-event. Extremely durable, high-density fiberglass frame. Nearly unbreakable, even in high winds. Includes a storage case.

Sizes one size



16.69.01.99

## VICTORINOX

The world famous, original Victorinox, branded with the ASSOS logo.



16.63.01.99

## FANPACK

fanPack is dedicated to all ASSOS fans to enjoy during their relaxation time, ideal after a bike ride. This boxed set includes an exclusive ASSOS mug and a luxuriously soft ASSOS towel. fanPack is the perfect gift for an ASSOS fan.

Towel size 50 x 100 cm



13.96.907.99

## ASSOS LUGGAGESET

Designed for the needs of the ASSOS Werksmannschaft to allow them to travel in functional style, ASSOS luggageSet comes in three sizes: The Weekend, The Week and The Month. Lightweight, strong, easy-rolling construction.

Sizes 1 set, 3 pcs.: S, M, L



black/white 17.06.01.50

## ASSOS MUGSET

CorporateMug + rallyMug



16.65.06.99

## COFFEESET

Set includes two espresso cups with ASSOS logo and two saucers, all in a presentation box.



16.65.01.99







OUR PRODUCTS

## GTASSOS

GTASSOS URBAN, LEISURE, TRAVEL AND CYCLING WEAR  
ANY SEASON – ANYWHERE – ANYTIME



## KOENIGSKRONEHELM

Taking inspiration from our ever-popular fu-guHelm, we designed this piece to give you a complete outfit for any weather conditions. We all know the importance of warm headgear when the weather is cooler, so the koenigskroneHelm will be a welcome piece in your GTASSOS collection.

Sizes**	0 – I – II
Composition*	49% PA, 24% PES, 13% EA, 11% PU, 2% PP, 1% EOL



C23.70.700.15

## SS.TRIKOTJERSEY

Lightweight, breathable and stylish, this short-sleeve jersey perfectly balances performance and casual design. Using our knowledge of materials and taking design inspiration from our cycling jerseys, we created the trikotJersey to give you optimal comfort when travelling, whether by plane, car or bike.

Sizes	S – M – L – XL – XLG
Composition*	43% PES, 37% PA, 20% EA



C21.20.200.57

## LS.TRIKOTJERSEY

This is the long-sleeve version of the SS.trikot-Jersey, and every ASSOS fan will quickly see where our inspiration came from — our cycling collection. So it's perfect for casual cycling, but its cut is smart enough for the office. This lightweight, breathable jersey is a must for anyone who demands ASSOS comfort but needs something a little dressier to wear when off the bike.

Sizes	S – M – L – XL – XLG
Composition*	43% PES, 37% PA, 20% EA



C21.20.201.57

## BLITZSTERNJACKET

One of the lightest and most breathable shells we have ever produced, blitzsternJacket is the ideal piece for those who like to travel light. Its distinctive black and white colour scheme gives the perfect casual look without causing raised eyebrows in the office. And its specially designed mesh areas increase breathability, yet it keeps

you warm enough when you're out and about, all making it the perfect shell to protect you on your commute. This shell may be small but it performs like a much more substantial jacket. Not to be overlooked!

Sizes	S – M – L – XL – XLG
Composition*	67% PA, 25% PES, 8% EA



C21.30.304.15

## GIGOLOJACKET

Taking all the key features of the gigoloVest, this jacket offers you a bit more protection and warmth for cooler days. Thermal, breathable and lightweight, it is the perfect additional layer over a trikotJersey or even the gigoloVest. Subtly designed to reflect its cycling inspiration, it won't

look out of place in the office or underperform on your commute.

Sizes	S – M – L – XL – XLG
Composition*	54% PA, 36% PES, 10% EA



C21.30.301.15



## KOENIGSHAUBEJACKET

This is the warmest jacket in our GTASSOS collection. It shares common features with the koenigshaubeVest, but offers more protection on colder days. It's not a ski jacket, but when layered over a trikotJersey and gigoloVest it will ensure you're properly dressed, whatever the weather. As with the rest of the GTASSOS collec-

tion, you can see the cycling inspired design, but we've kept it subtle. We want this jacket to say top-of-the-line-causal-sportswear, not hipster.

Sizes	XS – S – M – L – XL – XLG
Composition*	54% PA, 36% PES, 10% EA



C21.30.303.15



## GIGOLOVEST

This low volume thermal vest is at the center of our GTASSOS collection. It is a must-have, perfect under or over any other layer in the GT line. Taking inspiration from our sturmPrinz, this piece reflects its cycling roots without screaming, *Cycling geek!*

Sizes	S – M – L – XL – XLG
Composition*	54% PA, 36% PES, 10% EA



C21.30.300.15



## KOENIGSHAUBEVEST

This is a more aggressively styled piece within the GTASSOS collection. With its windproof material, like that used in our renowned sturmPrinz, it is ideal for cooler days, light rain showers or windy conditions. But still, this vest's styling is not out of place on your commute or in the coffee shop.

Sizes	XS – S – M – L – XL – XLG
Composition*	54% PA, 36% PES, 10% EA



C21.30.302.15





## BOXER

This is the first of two cycling-specific pieces in our GTASSOS collection. Designed to work as a cycling boxer, they come with an external insert to give you extra comfort on your commute. The specially-designed, thinner insert means that if you don't have the opportunity to get changed after your commute you will not feel like you're wearing cycling shorts with their bulkier insert. Add GTASSOS boxers to your wardrobe and give yourself a little extra comfort on your commute.

Sizes S – M – L – XL – XLG  
Composition\* 80% PA, 20% EA

## H.GIGOLOSHORTS

Strike the perfect balance between sports apparel and casual wear. These lightweight shorts are just as comfortable in the office as they are on the bike. Plus, their wrinkle-free material makes you look sharp no matter what you're doing.

Sizes XS – S – M – L – XL – XLG  
Composition\* 70% PA, 16% EA, 14% PES

## LL.GIGOLOPANTS

Taking their inspiration from our gigoloShorts, these pants offer the same level of performance and style, but they're better for cooler days. And their two extra pockets make them perfect for commuting or work. gigoloPants are cut for daily wear but with ergonomic details, such as the knee design and the ankle zip that protects the pants from the chain, that improve their perfor-

## LL.STUDIOPANTS

If you're looking for more refined styling in your pants, yet still demand ASSOS comfort and performance, reach for these. The straight cut of studioPants gives them a classic look. And — moving further away from the casual design of gigoloPants — we've added a more tailored, tra-



C21.10.104.15



C21.10.100.15



mance on the bike. And because they're made of our special wrinkle-free material, you'll look good on the bike and around the office.

Sizes S – M – L – XL – XLG  
Composition\* 70% PA, 16% EA, 14% PES



C21.10.101.15



ditional fly that makes studioPants truly elegant. They're more for the boardroom than the bike.

Sizes S – M – L – XL – XLG  
Composition\* 70% PA, 16% EA, 14% PES



C21.10.103.15





## LL.WINTERKOENIGPANTS

Ideal for colder days, these are our go-to pants for the winter commute and the workday that follows. Their liner, or pyjama, greatly increases warmth. We took our inspiration from the ALS climaRanges used with our cycling apparel so we could offer you the perfect outfit for all weather conditions.

Sizes S – M – L – XL – XLG  
Composition\* 70% PA, 16% EA, 14% PES



C21.10.102.15



## SPIDERBAG

Designed specifically for cycling, this low profile, lightweight and high-sitting backpack is forgotten once it's on. With an internal tablet pocket, three external pockets, lightweight and breathable straps, and its low volume, this is the subtle cycling backpack.

Sizes One size  
Composition\* 54% PA, 36% PES, 10% EA



C23.90.900.15

## GTASOCKS

We took all our knowledge of cycling socks and created gtaSocks, the perfect addition to your GTASSOS outfit. Lightweight, elegant, breathable and extremely comfortable, they are perfect for biking to work, while in the office or at home.

Sizes\*\* 0 – I – II  
Composition\* 65% CO, 20% PA, 15% EA



CP23.65.601.15

\*\* Sizes: 0 = 35–38, I = 39–42, II = 43–46



# SIZING CHARTS

This chart serves as a guide only. Exact sizes may vary depending on individual body structure. Bibs might pull when standing upright – this is normal.

## Fitting / Sizing

ASSOS garments are cut to fit a cyclist's body. If you don't have a more or less athletic body, ASSOS will not fit you properly. Our pattern design is anatomically shaped according to the ASSOS pattern design philosophy AEPD. ASSOS contours to your body, protecting it without applying pressure when you are on your bicycle. Get into the riding position and feel how ASSOS "clicks" onto your body. ASSOS is not very comfortable to wear when standing upright – it pulls – and this is normal. ASSOS' technical garments are not intended for leisure activities.

Not buying the right size (too big or too small) will result in comfort, performance or longevity problems. If a garment is too big, it will provoke skin irritation (because the garment moves around and causes friction) and it will not keep you dry enough (the ASSOS ALS principle cannot function properly). When a garment is too small, the seams and fabric are under too much stress and this will result in fabric pilling and deterioration.

If you have never worn ASSOS, we highly recommend visiting an ASSOS point of sale in order to determine your proper size before purchasing. Note: professional cyclists often start the year wearing size L, but as time goes by and kilometers accumulate, they start using smaller sizes. Proper sizing is essential – not only for professionals!

GET INTO THE RIDING POSITION & FEEL THE GARMENT "CLICK" ONTO YOUR BODY.

Our products are tailored for the cycling position. Cut anatomically without movement restriction on the bike.



Shorts, Knickers, Tights

Man					Lady	
Size	Height cm	Weight kg	Height inches	Weight pounds	Hip cm	inches
XS	150–159	<60	59.1 – 62.6	< 132	86	34
S	160–169	<70	1.63 – 66.6	< 154	90	36
M	170–179	<75	1.67 – 70.5	< 165	100	39
L	180–185	<80	70.9 – 72.8	< 176	102	40
XL	186–190	<85	73.2 – 74.8	< 187	110	43
XLG	191–195	<90	75.2 – 76.8	< 198		
TIR	= XLG, but wider	>90	= XLG, but wider	> 198		



Gloves

Size	Hand circumference cm	inches
XS	18	7
S	20	7,9
M	22	8,7
L	23	9
XL	24	9,5
XLG	26	10,2



Socks

Size	EU	US
0	35 – 38	4 – 7.5
I	39 – 42	8 – 10
II	43 – 46	9.5 – 12



# SIZING CHARTS

Jerseys  
Jackets  
Body Insulation  
Vests  
Rainbreakers



Jerseys  
Jackets



Size	Man	
	Chest	
	cm	inches
XS	90	36
S	96	38
M	100	39
L	102	40
XL	110	43
XLG	116	46
TIR	118 +	47

Chest	Lady	
	cm	inches
XS	80	32
S	85	34
M	90	36
L	96	38
XL	102	40

Booties



legWarmer  
kneeWarmer  
armWarmer



Caps



Size	EU	US
0	37 – 40	3.5 – 5
I	41 – 44	6 – 8.5
II	45 – 48	9 – 13

Size	
0	XS – S
I	M – L
II	XL – XLG

Size	Head circumference	cm	inches
0		48 – 53	19-21
I		53 – 58	21-23
II		58 – 63	23-25







CYCLING BODY RESEARCH CREATION & REFINEMENTS

FOLLOW US ON INSTAGRAM, SHARE PICS WITH US #ASSOSOFSWITZERLAND.  
FOLLOW US ON TWITTER @ASSOS\_COM, WWW.FACEBOOK.COM/ASSOSOFSWITZERLAND